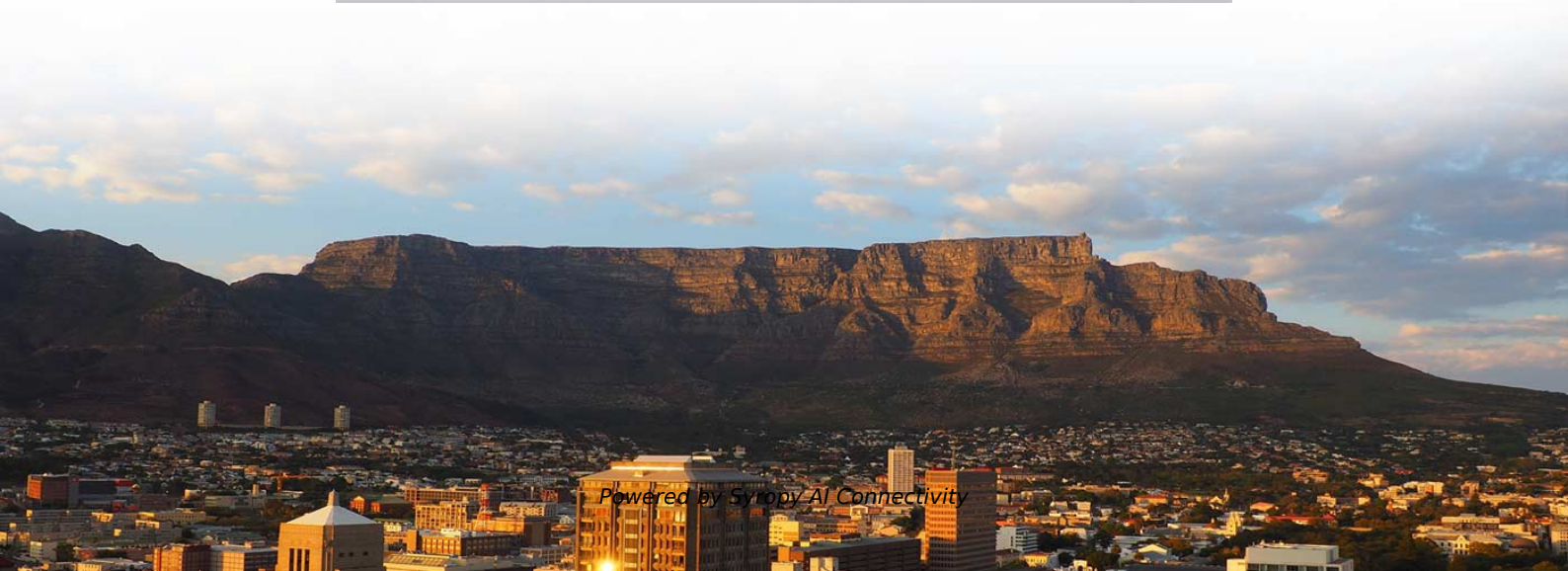


288 Ribbon Fiber Optic Cable Junction Box





288 Ribbon Fiber Optic Cable Junction Box

288 432 Core Ribbon Optical Fiber Optic Splice Closure



288 432 Core Ribbon Optical Fiber Optic Splice Closure Joint Box, Find Details and Price about Fiber Optic Joint Box 288 Core Joint Box from 288 432 Core Ribbon

Ribbon Fiber Cable

Product Number: FISR288A5 Indoor Flexible Ribbon OS2 288 Fibers OFCP Aluminum Interlocked Armor Sub-units 3.0mm (24F) FX Indoor, Flexible Ribbon, OS2, 288 Fibers, OFCP Aluminum



GJS-25-8 Fiber Cable Joint Box 288 Cores

GJS-25-8 fiber cable joint box belongs to the mechanical pressure sealing joint system, mainly used to splice and wire the fiber cables in the FTTx network project.



1 In 16 Out Fiber Optic Splice Closure with Splitter Slot,

It features one oval inlet and 16 round ports, allowing flexible cable entry, branching, and network expansion. The enclosure is made of high-quality engineering



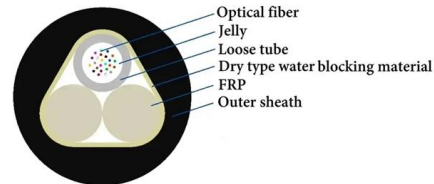
UltraRibbon(TM) Indoor, Gel-Free Cables, 288

Standards Listings National Electrical Code® (NEC®) OFNR, FT-4 Design and Test Criteria ANSI/ICEA S-83-596; CSA FT-4 Corning UltraRibbon(TM) Riser Gel-Free Cables continue the innovative



Corning OSE-288 Specialized Optical Splice Enclosure Kit, 288-Fibers

Shop Specialized Optical Splice Enclosure Kit, 288-Fibers, 12 Splice Tray Capacity, Wall-Mount, 23 In. Rack, 30 H X 20 W X 11 D In. By Corning (OSE-288) At Graybar, Your Trusted Resource For Fiber



High Quality Outdoor Fiber Optic Splice Box Termination

We are providing high quality fiber optic terminal box which is up to 288 ports. The compact size and flip-over cover bring easy operation. The splice trays are joined



Fiber Optic Joint Closure 288 Core, 4 In 4 Out

Quality Fiber Optic Joint Box manufacturers & exporter - buy Fiber Optic Closure 288 Core, 4 In 4 Out Horizontal Fiber Optic Junction Box from China



FISR288P5

We are also not able to ship to Post Office Box addresses. If you wish to ship to an address outside the United States or a military/government location, please contact your local Anixter sales

Cable Breakout Kits for Ribbon (12f to 288f)

Sumitomo Electric Lightwave's Breakout kits are designed to help manage, protect & split 12 to 288 fiber cables using 12 fiber standard flat, or pliable ribbons including



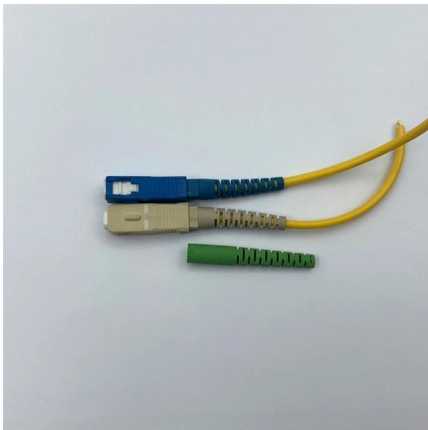
Big Capacity 288 Core Fiber Splice Joint Box

Big capacity 288 core fiber splice joint box Fiber Optic Splice Closures are designed to simplify splice management and maintenance. Intuitive engineering design



Breakout Kit for High Fiber Count Ribbon Cables (288f)

There is a difficulty in logistically splitting large fiber cables within distribution frames & cabinets based on the areas that they are needed.
Sumitomo Electric

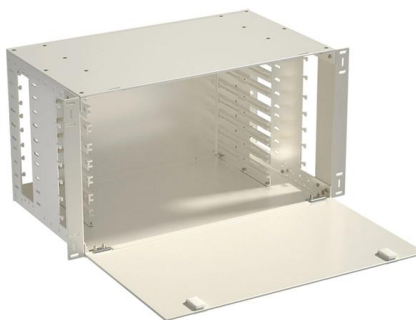


MICOS Fiber Optic Boxes MDB FA 288S

The Fiber Optic Boxes MDB FA 288S are designed for the placement of 288 optical splices indoors and outdoors. A pole holder can be attached. It is a very suitable solution for spliced GPON networks.

Which Fiber Optic Junction Box is Best?

When it comes to fiber optic junction boxes, a variety of options are available. Usually, a common question asked by customers is which box is best for their application.



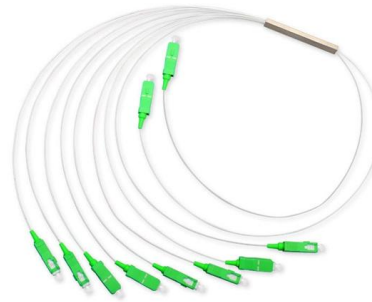
Fiber Identification Charts - 288-864 Fiber

Wrapping Tube Cable (WTC) with SpiderWeb Ribbon® (SWR®) This document provides direction on properly identifying the ribbon and individual fiber in the AFL Wrapping Tube Cable. Depending on



288 Core Splitter Splice Closure 2/4 Ports Fiber Cable Joint Box Fiber

Durable Construction: The fiber optic splicing enclosure is made from high-quality PP+GF material, ensuring a robust and long-lasting performance in various operating temperatures between 40°C to



FISR288P5

BELDEN , FISR288P5 288-STRAND OS2
DISTRIBUTION RIBBON FIBER PLENUM CABLE
MFR PART # FISR288P5 PART # 10583802 Email

288 strand fiber optic cable

Ribbon fiber cable is making a series of separate fiber (4F, 6F, 8F,12F and so on) bond each other, which is grouped together to be a flat strip. Many groups or strips form the optical cable, called



NG4-CBOUT-288

To prove you're not a bot, solve this simple math problem. The machine translated document is now available for download.



All You Need To Know About Fiber Termination Boxes:

Source In this blog, we will discuss the two types of fiber optic cables and the role of a simple yet essential piece of equipment in the fiber laying



OSE-288 , Specialized Optical Splice Enclosure (OSE) Kit 288 F with

Corning optical splice enclosure (OSE) provides a transition point between outside plant cable and indoor cable in fiber optic networks. This rugged enclosure protects up to 288 single-fiber or 48



288 core Cable Joint Closure Fiber Optic Access Terminal Junction

Splicing Capacity: 288 (24F/tray) Input Ports: 1 oval uncut port Output Ports: 6 Ports Input Cable size: 8~17.5mm Dimensions (mm): 385*245*130mm Material: PP Mounting method: wall mounting and



FISR288P5

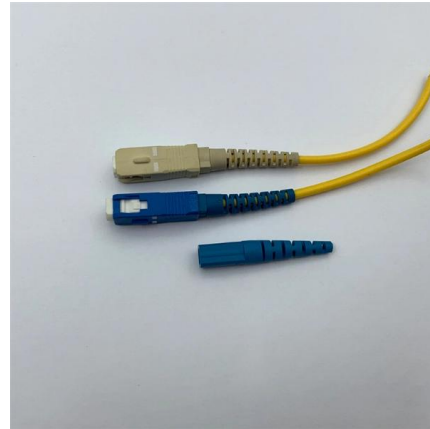
FISR288P5 - Indoor OFNP OS2 Flexible Ribbon 288 Fibers 24F Subs





FISR288L5

FISR288L5 - Indoor OFNR OS2 Flexible Ribbon
288 Fibers 24F Subs



Fiber Optic Color Code Chart For 144 and 288 Count

This is an update on a post we made a few years ago for a 144 count fiber color identification chart. Since then we have noticed thousands of searches from

Contact Us

For datasheets, pricing, or custom high-speed optical interconnect solutions, please visit:
<https://www.syropy.com.pl>