

288 Optical Cable Loop Diagram





288 Optical Cable Loop Diagram

#FTTx #fiberoptic FiberOptic Cable Explained: 48, 96, 144, 288 Core



1075KWHH ESS

Welcome to FTTX Telecom, your complete guide to Telecom Infrastructure, FTTx networks, and fiber deployment permits. Understanding Fiber Cable: Core Counts, Tube Structure & Sizes (48 to 288 Core

Fibre Optical Multi Loose Tube Cable, Outdoor, 288F

Applications Building interconnection, Backbone networks, Telecommunication and drop cable applications. Cross Section Drawing



Anixter - Wire and Cable, Networking, Security and Utility Power

Anixter - Wire and Cable, Networking, Security and Utility Power Solutions

Micro Cable, 12f x 24 (288f)

The above chart is a quick reference guide for identification of fibers and tubes in the most common cable designs. For detailed information about the color code systems, please contact Hexatronic.



Fibre Optic Cable Horizontal 288 Fibre Outdoor Cable

Product Description Briticom® offers a wide range of indoor and outdoor fibre optic distribution, patching and consumer cables including Plenum, Riser and LSZH in all diameters. These are used to provide



FastFibre Loose Tube Fibre Cable 288f , Matrix Global Networks

FastFibre Loose Tube Fibre Cable up to 288 fibres, Cut to Length. See our website for details or contact us for more information 01908 951000 or 01373 858466



SINGLE MODE OS2 MULTITUBE ARMoured FIBER OPTIC CABLE

Structure Diagram & Description Our armoured loose tube cables are the product of choice as the backbone in Outside Plant (OSP) environments. tube design offers reliable transmission





Opti-Core 144 and 288-Fibre Indoor Ribbon Cables, LSZH and

288 singlemode fibres for high density data center distribution applications. The fibres shall be ribbonized for easy mass fusion splicing and termination with 12-fibre MPO style connectors.

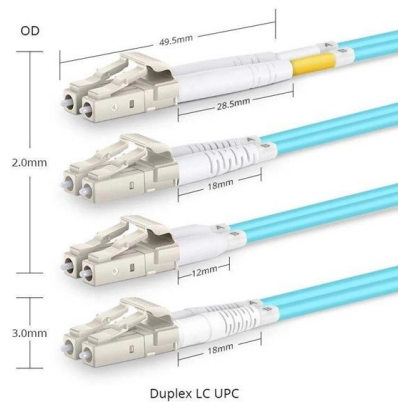


SINGLE MODE MULTITUBE UNARMoured FIBER OPTIC CABLE

Structure Diagram & Description Our loose tube cables are the product of choice as the backbone in Indoor/Outdoor environments.

Schematic diagram of fiber-optic cable layout and

The article presents research on the performance of different distributed fibre optic sensing (DFOS) tools, including both layered cables and monolithic composite



TECHNICAL DATA SHEET FOR OPTICAL FIBER CABLE AIR

of Optical Fiber Cable 5.1 Cable bending radius: 15 x cable diameter (static) 20 x cable diameter (dynamic) OPTICAL FIBER CABLE FOR OUT-DOOR APPLICATIONS Page 4 of 5 5 2 Application



288 Fibre Stranded Loose Tube Cable

The dual layer tube construction is stranded around a central strength member and contained within a dry, water blocked cable core, sheathed with polyethylene (PE) and UV stable, termite resistant



General Cable NextGen® 288 Fiber Count Loose Tube Dual Jacket

NextGen 288 Fiber Count Loose Tube Dual Jacket Armored Outside Plant Fiber Optic Cable

Technical Specifications 12/24/48/96/144/192/216/288F Multitube

Cable Performance Standards IEC 60793, ANSI/ICEA S-87-640, Telcordia GR-20, ITU-T, RoHS, REACH.



Fiber Identification Charts - 288-864 Fiber

Wrapping Tube Cable (WTC) with SpiderWeb Ribbon® (SWR®) This document provides direction on properly identifying the ribbon and individual fiber in the AFL Wrapping Tube Cable. Depending on



288 Fiber Construction Diagram Guide , PDF , Optical Fiber

The document provides detailed specifications for multi-tube single sheath ribbon type armored cables, including construction diagrams for fiber counts ranging from 2F to 576F.



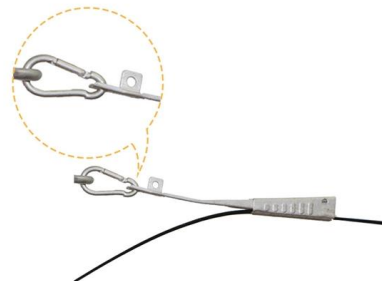
Fibre Optical Multi Loose Tube Cable, Outdoor, 288F

Building interconnection, Backbone networks, Telecommunication and drop cable applications. Cross Section Drawing



Product Spec Sheet 288ZV4-14700S53

288ZV4-14700S53 Corning RocketRibbon® Cable-250 with FastAccess® Technology represent a truly innovative breakthrough in outside plant cable technology. Providing up to 864



SINGLE MODE MULTITUBE UNARMoured FIBER OPTIC CABLE

APPLICATIONS Indoor and Outdoor, Trunk, distribution and feeder cable, Local loop, metro, long-haul and broadband network.



Fiber Optic Cable Cheat Sheet dd

FIBER OPTIC CABLE CHEAT SHEET Key questions to help identify the correct fiber optic cable: 1. Do you know the fiber optic count? 2, 6, 12, 24, 36, 48, 72, 96, 144, 288 10. Do you know the



Enbeam OS2 Armoured CST Fibre Optic Cable Loose Tube 288 Core

The singlemode fibre is G.652.D compliant low water peak grade and offers OS2 performance and OS1 backwards compatibility. These compact, lightweight cables are extremely rugged, provide rodent



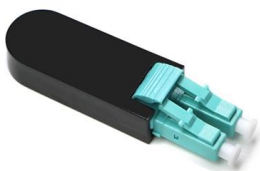
Fiber Identification Charts - 144-288 Fiber

Wrapping Tube Cable (WTC) with SpiderWeb Ribbon® (SWR®) This document provides direction on properly identifying the ribbon and individual fiber in the AFL Wrapping Tube Cable. Depending on



Fiber Color Identification Chart

Fiber strands and cables are manufactured with a standard color coding. This allows for easy, effective management and identification of strands. An example; a loose buffer tube cable with





Product Spec Sheet 288TVZ-14180D20

LSZH UltraRibbon cables employ a single buffer tube containing a stack of 24-fiber ribbons that are easily separated by hand into two 12-fiber ribbons respectively. This cable is also available with



TECHNICAL DATA SHEET FOR OPTICAL FIBER CABLE AIR

TECHNICAL DATA SHEET FOR OPTICAL FIBER CABLE AIR BLOWN APPLICATION (SM 24/36/48/72/96/144/288 FIBERS)

GCCF288 Technical Data Sheet

Product feature: This cable has improved rodent protection by Corrugated Steel Tape (Full Rodent Protected). Existing out of 12 tubes with a diameter of 2.5mm with 288 fibers (12t x 24f) MM OM2.



Contact Us

For datasheets, pricing, or custom high-speed optical interconnect solutions, please visit:
<https://www.syropy.com.pl>