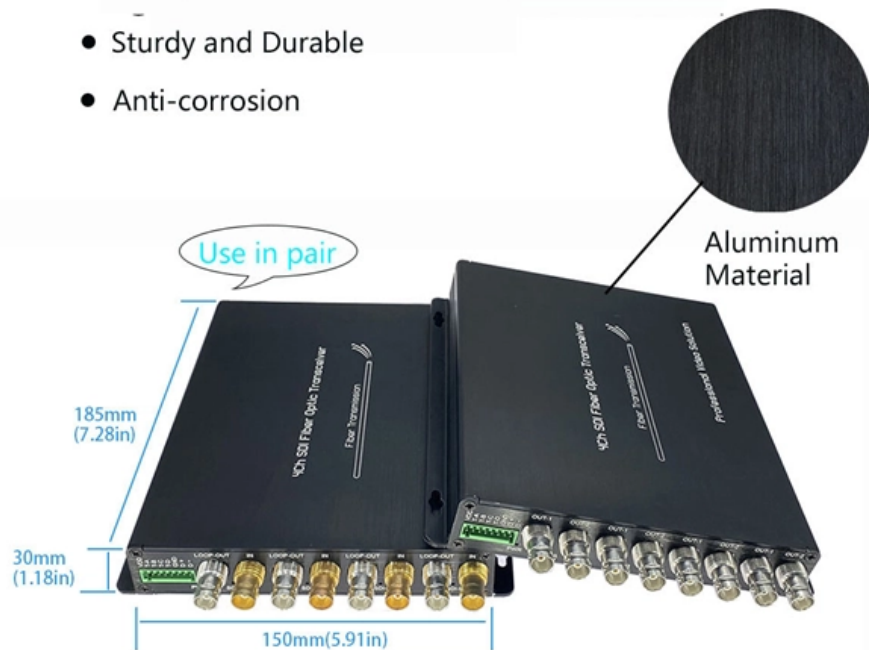


# 24-core optical cable parameter specifications table

High Quality Aluminum Housing with Compact Size

- Sturdy and Durable
- Anti-corrosion





## 24-core optical cable parameter specifications table

---



### Enbeam OM4 Multimode Fibre Optic Cable Loose Tube 24 Core

Product Overview Excel OM4 50/125 um loose tube optical fibre cables have been designed specifically for internal and external applications. These compact, lightweight cables are extremely flexible and

### Cable Datasheet opticalCON MTP 24 ADVANCED

Cable Datasheet opticalCON® MTP® 24 ADVANCED Ripcord PVC - Inner Jacket 2 - AWG16 Stranded Cooper Wire (1.95 mm) (M22759/34-16) Central Strength Member/Filler Ripcord Tight Buffered



### Optical Fibre Cable Technical Specification

This Specification covers the design requirements and performance standard for the supply of optical fibre cable in the industry. YOFC ensures a stable quality control system for our cable products

### Enbeam OM4 Multimode Fibre Optic Cable Loose Tube 24 Core

These compact, lightweight cables are extremely flexible and are quick and easy to install. The cables are constructed around a gel filled (non-dripping and silicon free) tube containing up to 24 colour



### **Opti-Core Fibre Optic Indoor-Outdoor 4 Fibre Cable SPECIFICATION**

SPECIFICATIONS The fibre cable shall contain up to 24 fibres and have an all-dielectric loose tube construction. It shall be suitable for indoor applications, complying with IEC standards for low smoke /



### **2 Core Optical Fiber Cable\_Specification**

Single-mode /multimode for option OM3 for multimode Optical Fiber 2 Cores Inside Compatible with all standard fibre optic equipment and connectors Stainless Steel sheathing Ceramic connectors ensure



### **Recommendation ITU-T G.652 (08/2024)**

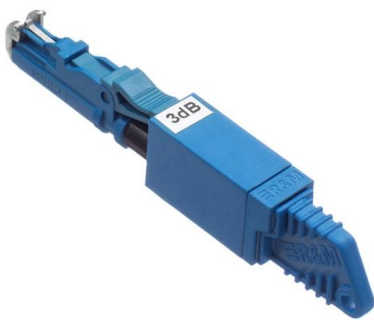
This document outlines the specifications for a single-mode optical fiber and cable designed for use around the 1310 nm zero-dispersion wavelength, suitable for





## RDSO SPECIFICATION OF

This document specifies technical specifications of 24/48 Fibre Armoured Optical Fibre Cable.

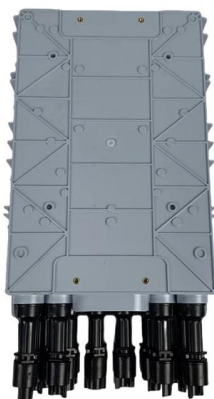


### Understanding and Selecting Optical Fibre and Cable

In this document, the relationship between the cable features, followed standards, test parameters, and acceptance criteria are explained with examples for a better understanding of an optical fibre cable

### UNDERSTANDING FIBER SPECIFICATIONS

Optical fiber products are defined by many parameters that will vary for each application and for each potential system design within those applications. If you



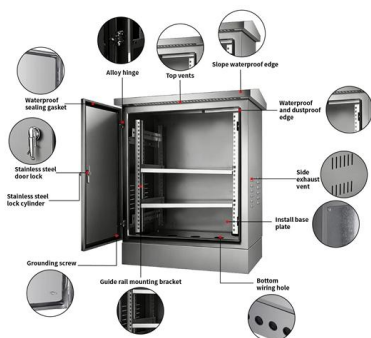
### Handbook Optical fibres, cables and systems

The optical fibres are specified in ITU-T with reference to the geometrical, optical, transmission and mechanical attributes listed in Table 1-1. However, as shown in the same table, for some attributes



## ADSS 24 CORE FIBER OPTIC CABLE HYU-CAB-ADSS24C002

Application Adopted to indoor or outdoor distribution; Small cable size, light weight; With excellent waterproofing performance. Kevlar yarn make cable more tension.

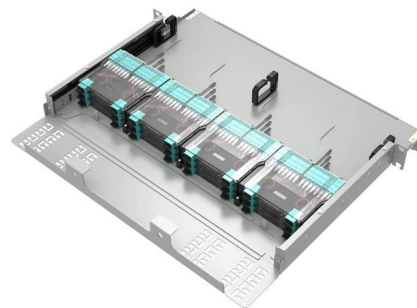


### 24 Cores Distribution Fiber Optic Cable

SABA 24 cores distribution fiber optic cable is constructed with loose tube fibers, aramid yarn strength member, LSZH is metal free outdoor cable . Quality of the product is tested according to IEC Standards.

### Armoured Fibre Optic Cable & FODP

1.0 Description a) This is a reference technical specification for survey, planning, co-ordination with other suppliers' equipment, design, Engineering, supply at site including transportation, laying, installation,



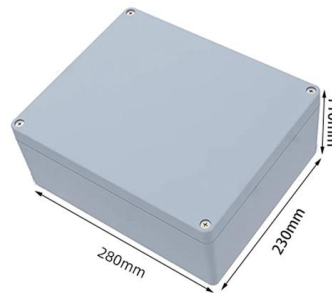
### CABLES FOR DATA TRANSMISSION

Technical data, dimensions and weights are subject to change.



**Opti-Core Fibre Optic Indoor-Outdoor 4 Fibre Cable**

SPECIFICATIONS in up to 24 fibres and have an all-dielectric loose tube construction. It shall be suitable for indoor applications, complying with IEC standards for l w smoke / zero halogen and



**FIG 8 OPTICAL CABLE GYTC8S 24 CORE.cdr**

FIG 8 OPTICAL CABLE 24 CORE GYTC8S 24B1.3 Cable structure and parameter FIG 8 OPTICAL CABLE 24 CORE GYTC8S 24B1.3 Messenger wires Web Jelly Optical fiber Loose tube Central



**Optical Fibre Cable Technical Specification**

3.4 Dimensions and Descriptions The standard optical cable structure is shown in the following table, other structure and fibre count are also available according to customer requirements.



**Technical Specifications for UnaArmoured Underground Fibre Optic Cable**

The tests listed in Table 1-3(a) shall be carried out as Factory Acceptance Test for Underground fibre optic cable meeting the requirements specified in this section after Factory acceptance Testing of





## Color Code Guide For Fiber Optic Specifications

Tubes with 24 uniquely colored fibers: Fibers 1 to 12 use the standard blue through aqua color sequence. Fibers 13 to 24 use black dashes on the same 12 fiber color sequence except for fiber 20



## Technical Specifications

Technical Specifications For ADSS (All Dielectric Self Supporting) Optical Fiber Cable (ADSS-24 Cores, single sheath, ITU-T G.652.D Fibers)

## Optical Fiber Product Information Sheets

An all inclusive list of the various optical fiber specification sheets.



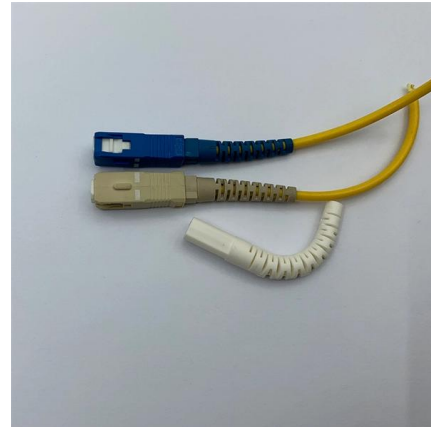
## Single-Mode Fiber Cable Guide: Types, Specs & Selection

This comprehensive guide explores Single-Mode Fiber Optic Cable, covering technical specifications, deployment scenarios, and best practices to help you optimize your fiber infrastructure



## GYTS 24-144 Core Outdoor Optical Fiber Cable

Product Description GYTS outdoor fiber optic cable, is also called multi loose tube steel tape external cable, is consisted of 250um fibers held in oil filled PBT loose tubes wrapped around a phosphatized



MTP MPO SC-Type Fiber Adapter



## Fiber optic cable Catalog

Fiber Optic Cables Technical Catalogue FTTH  
Optic Fiber Micro Cable Sample Fiber Optic Micro  
Cable Optical Fiber Core Waterproof thixotropic  
jelly PBT Tube (Loose Tube)

## Multimode Optical Fiber Selection & Specification

Table 5 provides the bandwidth and attenuation parameters for OM-compliant fiber types specified in Tables 3 and 4. For a fuller explanation of bandwidth characterization in MMF, please consult AE



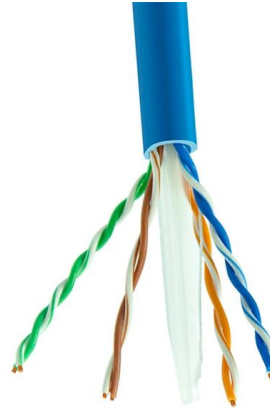
## TE Connectivity

Hier sollte eine Beschreibung angezeigt werden, diese Seite lässt dies jedoch nicht zu.



### **Loose Tube Internal/External Fibre Optic Cable (max 24F)**

This cable meets the requirements of the Low Voltage Directive 2014/35/EU, the RoHS Directive 2015/65/EU and Reach Directive EC 1907/2006. RoHS compliance has been tested and confirmed



## **Contact Us**

---

For datasheets, pricing, or custom high-speed optical interconnect solutions, please visit:  
<https://www.syropy.com.pl>