

24-core optical cable configuration link





24-core optical cable configuration link

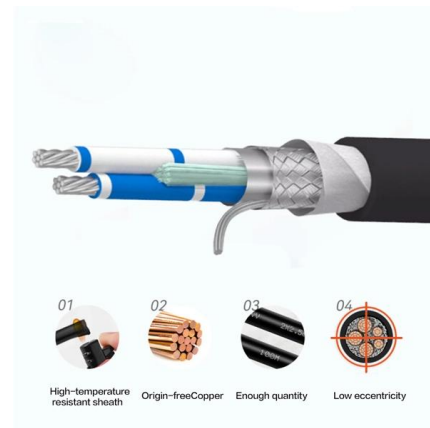


Fiber optic channel link configuration

Fiber optic channel links, which require separate optical fibers for sending and receiving information, use IBM duplex or FICON® duplex connectors, duplex jumper cables, and 2 trunk fibers. A fiber optic

How to choose the number of fiber cores?

This article will focus on the number of fiber cores, introducing their respective characteristics and usage scenarios. According to the traditional IBDN

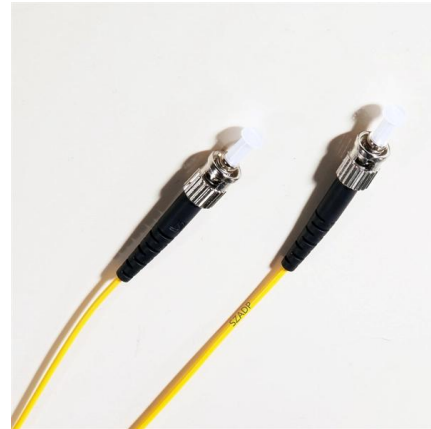


Opti-Core Fibre Optic Indoor-Outdoor 4 Fibre Cable

Opti-Core™ Fibre Optic Indoor-Outdoor 24 Fibre Cable Europe, Middle East, and Africa

TE Connectivity

Hier sollte eine Beschreibung angezeigt werden, diese Seite lässt dies jedoch nicht zu.



How to do 24 core Fiber optic splicing arrangement inside the cable

Previous video we explain how to do splicing of fibers optic cable in joint closure. this video are showing how to arrange sleeves in the cable tray and arra



Understanding 24 Strand Multimode Fiber Optic Cable: A

The 24 strand multimode fiber optic cable stands as a beacon of innovation, enabling the rapid and reliable transmission of information across the globe. As we continue to unlock the potential of this



MPO-24 Fiber optic cables

However, the polarity maintenance of 24-core MTP/MPO wiring is very complicated. Currently, there is no industry standard to define the type of 24-core MTP/MPO





Planning for Fiber Optic Links

It is highly recommended that the fiber optic link be thoroughly analyzed to ensure the cable plant specifications (total cable plant optical loss as well as connectors/splices return loss) are being met

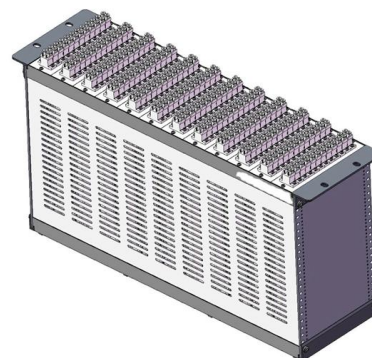


24 Cores Distribution Fiber Optic Cable

Internal cable for installation in trunking, under floor or ceiling spaces Short run external links between buildings Fibre backbones in riser and horizontal configuration High return loss and low insertion loss

How Many Cores Do You Need in Your Fiber Optic

Fiber optic cables are the backbone of modern internet infrastructure, but choosing the right one can be tricky. One key factor is the number of cores,



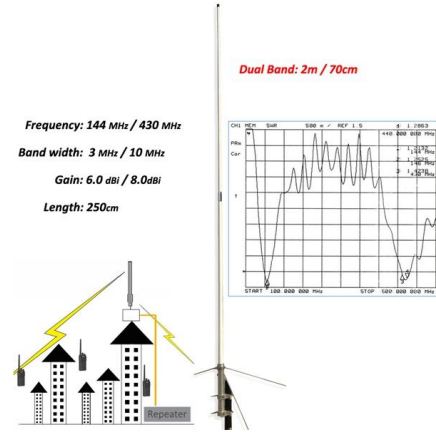
How to Use 24 Fibers MPO/MTP Cable in 40G/100G Networks?

In this solution, the 8-port 24-core MTP/MPO optical fiber adapter panel can support up to 192-core optical fiber. For QSFP applications, the density of a 24-core MTP/MPO adapter panel under the

Hier sollte eine Beschreibung angezeigt werden,



diese Seite lässt dies jedoch nicht zu.



24 Core and 48 Core Fiber Optic Cable

24 Core and 48 Core Fiber Optic Cable Fiber optic cable is a cable containing one or multiple optical fibers that are used to transmit the signal. The optical fiber



Enbeam OM4 Multimode Fibre Optic Cable Loose Tube 24 Core

The cables are constructed with a single dry loose tube containing up to 24 colour coded 250 um primary coated fibres. This tube is covered with an E-glass strength member.



Link UFC9624M Fiber Optic 24 Core OS2 9/125 um

????????????????? UFC9624M ??? 24 Core Multi Tube ?????? Single-Mode ?????? OS2 ????? Core ?????????????????? 9 ?????? ????? Cladding ?????????????????? 125





MPO Connectors Explained: Fiber Counts, Polarity

Learn everything about MPO connectors: MPO vs MTP®, 12 vs 16 vs 24 fibers, polarity A/B/C, male vs female pinning, low-loss targets, cleaning, and



MTP/MPO Cable Selection Guide for Different Core

Unlock new possibilities with MTP/MPO cables and different core numbers. Elevate your network's performance - upgrade today.

8F 12F 24F Fiber Breakout Configuration Explained

Breakout configuration should be selected based on routing environment, termination density, and maintenance workflow. 8F breakouts are



How to Connect Multiple Ethernet Switches Using Fiber

Posted on June 24, 2024 by FC -- Leave a comment How to Connect Multiple Ethernet Switches Using Fiber Optic Cables? If you have multiple Ethernet



8 core, 12 core, 24 core MPO connector

Compared with MPO-8-core or MPO-12-core systems, MPO-24 systems are more widely used in parallel applications. 100G SR-10 applications require multimode fiber in a 10-pair 10x10G



Fiber Patch Cords 4/6/12/24 fibers for ODN and Data

Multi-core patch cords are fiber assemblies containing multiple fibers within a single cable jacket, typically available in 4, 6, 12, and 24-fiber

Comparing 8, 12, 16, and 24 Fiber MPO Connectors

Compare 8, 12, 16, and 24 fiber MPO Connectors to understand differences in fiber count, compatibility, and how each type fits your network's needs.



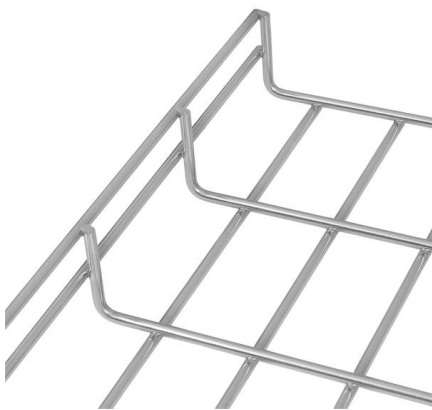
How to use base-24 MTP / MPO structured cabling in 40G / 100G

In order to increase the network scale, mtp-lc optical fiber distribution box and duplex LC optical fiber jumper are used to establish communication links between two 24 core MTP optical fiber



24 Core Cable The Future of High-Speed Connectivity

Abstract 24 Cores is a term commonly used in the fiber optic cable industry to describe a specific type of cable that contains 24 individual optical fibers. These cables are widely used in various applications

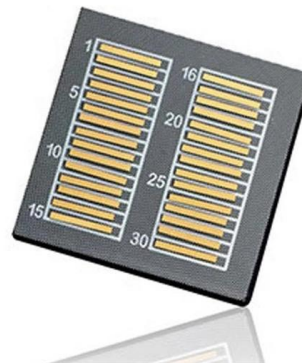


24 Cores Singlemode Fiber MPO/MTP

The MPO can be mass terminated in combination of 24 fibers. MTP®/MPO multi-fiber trunk cables are usually in mini-round cables and ribbon cables, with fanout kits broken down into 2~24 fiber 0.9mm

Selecting Between 12-Fiber and 24-Fiber for 40/100G

This article will discuss the advantages of MTP®/MPO-24 cabling compared to MTP®/MPO-12 cabling and how MTP®/MPO-24 provides the



FibreFab-Fibre-Optic-Cable-Catalogue

Simplex Fibre Optic Patch Cable Optronics simplex fibre optic patch cable is ideal for use in office LAN connections, patchcords, pigtailed and internal point-to-point links where frequent handling is likely



24 Cores Distribution Fiber Optic Cable

Excellent crush and tensile resistance. Available in Single mode or Multi mode according to the demand of the customers.



Contact Us

For datasheets, pricing, or custom high-speed optical interconnect solutions, please visit:
<https://www.syropy.com.pl>