



2 5G Aggregation Switch Original Product



2.5G 30-port L3 managed Ethernet switch

The ONV57030FM is a 2.5G managed Ethernet switch independently developed by ONV. It has 24*10/100/1000/2500Base-T adaptive RJ45 ports and 2*1/10G RJ45

Aggregation , TP-Link

Aggregation Series Switches Equipped with all-fiber ports, Aggregation Series Switches deliver up to 25 Gbps. With features such as Static Routing, DHCP Server, ACL, IGMP Snooping, STP, LAG, and



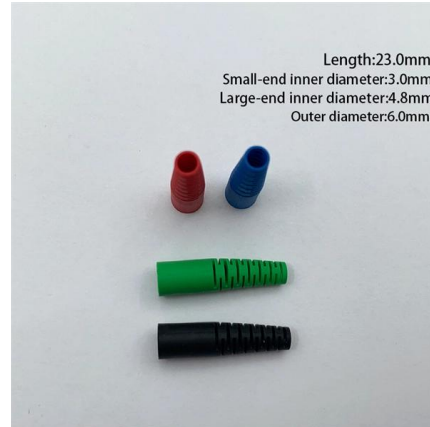
BrosTrend 2.5Gb Switch, Unmanaged 8 Port Ethernet

Combined 5Gbps Bandwidth: Unlock up to 5Gbps with Static Link Aggregation on this Ethernet switch 2.5 gigabit--perfect for dual-Ethernet-port devices like NAS



SODOLA 2.5Gb Easy Web Managed Switch,

SODOLA 2.5Gb Easy Web Managed Switch, 2x10GBase-T Ports and 4x2.5GBase-T Ports, Full RJ45 Managed Ethernet Switch with Link Aggregation,VLAN,IGMP,



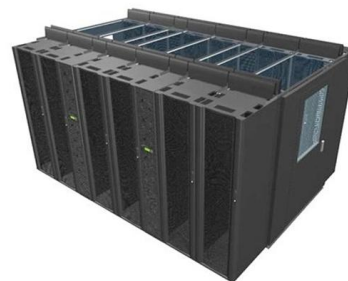
Ubiquiti UniFi Switch Aggregation Managed Layer 2

Get it now! USW-Aggregation is a managed Layer 2 switch with eight 10G SFP+ ports, offering link aggregation for higher capacity and increased



Amazon : UGREEN 2.5Gb Switch, 6-Port Ethernet

Unlock 2.5Gb & 10Gb Speed: UGREEN 2.5Gb switch features 5 × 2.5Gb and 1 × 10Gb SFP+ port. Supports up to 12K jumbo frames for efficient large file transfers



2.5G Switch with Link Aggregation? , SNBForums

I'm shopping for switches now, and I have the requirement of link aggregation on the switch. I have a Synology NAS that supports it, but they're only 1G ports. However, I'm moving over





In-depth analysis: What is an aggregation switch?

In many network constructions, we have all heard of switches. So do you really understand switches? Why are aggregation switches often overlooked?

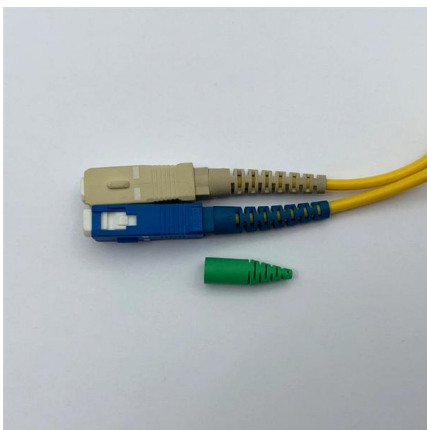


USW-Pro-Aggregation natively supports 2.5 GbE transceivers

I recently noticed that the legend on the port view for my USW-Pro-Aggregation has an entry for 2.5 GbE. This led me down a rabbit hole where I

ECS4125-10T

The Edgecore ECS4125-10T is a robust 2.5 Gigabit Ethernet access switch designed for Small to Medium-sized Businesses (SMBs), enterprises, and campus



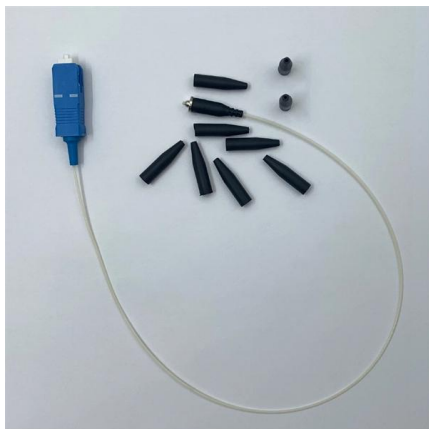
Switch Aggregation

An 8-port, Layer 2 switch made for 10G SFP+ connections.



Ubiquiti Unifi USW-Pro-Aggregation 32-Port 25G L3 Managed Switch

Switch Pro Aggregation Layer 3 switch with (28) 10G SFP+ ports and (4) 25G SFP28 ports. The Switch Pro Aggregation is a fully managed, Layer 3 switch with (28) 10G SFP+ ports and (4) 25G SFP28

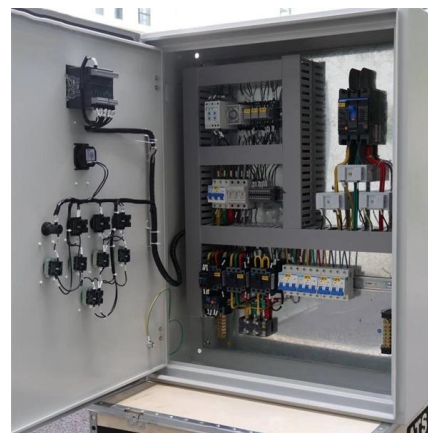


Aggregation Switches , Global , Zyxel Service Providers

Enhance your network with Zyxel's aggregation switches, offering advanced QoS, superior security, and a resilient design for seamless convergent services.

MGSW-28240F

Via the link aggregation of supporting ports, the MGSW-28240F allows the operation of a high-speed trunk to combine with multiple fiber ports and supports fail-over



link aggregation switch 2.5gb

Search Newegg for link aggregation switch 2.5gb. Get fast shipping and top-rated customer service.



Question about aggregation switch and 2.5Gb connections

Hi, I was wondering if the Aggregation switch can do 2.5Gbps on some of the SFP ports and if so, do I require a special SFP connector that will do 2.5Gbps or will a 10Gb Ubiquiti SFP to copper translate



ECS4155-30P

The Edgecore ECS4155-30P switch is a versatile 1G/2.5G multi-Gigabit Ethernet access/aggregation switch designed to meet the needs of Internet Service

TL-SG105-M2 , 5-Port 2.5G Desktop Switch , TP-Link

As the flagship 2.5G product, the 5-Port desktop switch delivers reliable, super-fast connections with the lowest latency possible--without the need to upgrade to



What Is an Aggregation Switch and How to Choose?

An aggregation switch is a network device that consolidates traffic from multiple access switches, wireless access points, or other edge devices and



Switch Hi-Capacity Aggregation

A 32-port, Layer 3 switch made for high-capacity 10G SFP+ and 25G SFP28 connections.

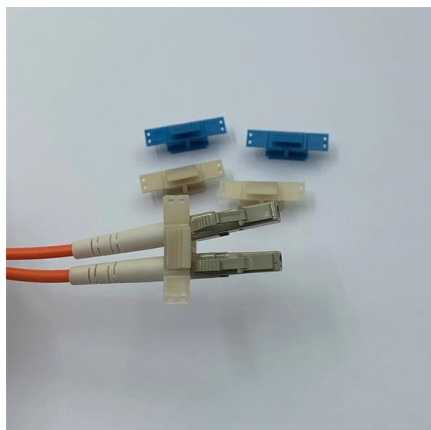


24 Port 10G Aggregation Switch Enterprise SONiC

The SONiC-based 24 port 10G aggregation switch with 4x100Gb QSFP28 uplinks, the 10 gigabit switch 24 port with Marvell Aldrin 2 chip, ROCEv2 & EVPN Multi

What Is an Aggregation Switch and How to Choose?

So, what exactly is an aggregation switch, and how do you choose the right one? Let's examine it in detail. What Is an Aggregation Switch? An aggregation switch



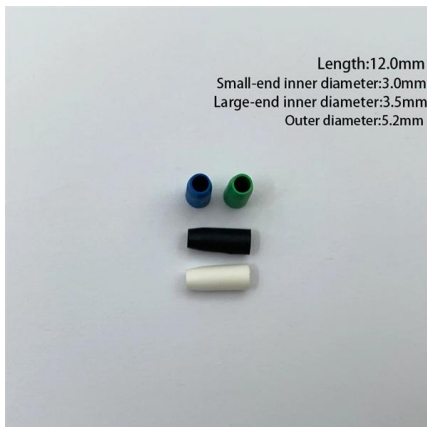
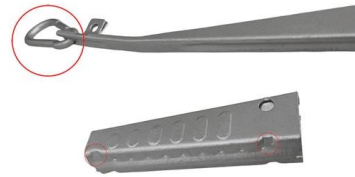
SODOLA 24 Port 2.5G Smart Web Managed Switch,24

?2.5G Easy Web Management?Effortlessly 2.5gbe web managed switch, device status, and configurations via the intuitive web interface, and a suite of



L2/L3 Aggregation Switch

L2/L3 Aggregation Switch ISCOM S5600G Series
The ISCOM S5600G series switches are the new-generation and high-efficiency Layer 2/3 Gigabit Ethernet switches.



Reddit

Hier sollte eine Beschreibung angezeigt werden, diese Seite lässt dies jedoch nicht zu.

Best 2.5Gb Switch in 2026: Tested and Reviewed

In this guide, we've tested and reviewed the best 2.5Gb switches to help you make a smart, future-proof investment.



DMS-1250-28 28-Port 2.5G Smart Managed Switch , D-Link

The DMS-1250 Series switches elevate your network with 2.5 Gbps ports, optimized for Wi-Fi 6 access points to maximize throughput and speed. Multi-Gigabit Ethernet eliminates bottlenecks, fully utilizing



Contact Us

For datasheets, pricing, or custom high-speed optical interconnect solutions, please visit:

<https://www.syropy.com.pl>