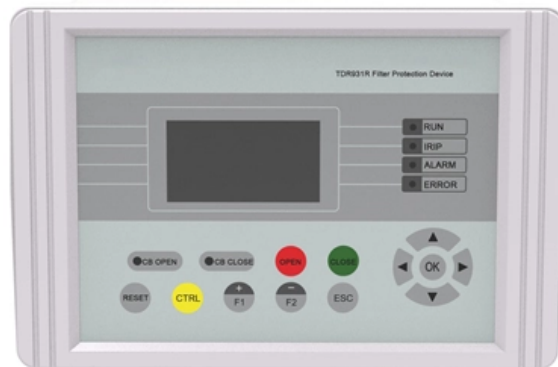


19-inch chassis mounting bracket





19-inch chassis mounting bracket



Amazon : Hardware & Brackets

Online shopping for Hardware & Brackets - Chassis from a great selection at Automotive Store.

19-inch Rack Mount Bracket for ASUS NUC 15 Pro

Designed for standard 19" server racks, this 2U bracket supports efficient setups in mini PC clusters, edge computing nodes, silent NAS systems, or Kubernetes



Quality 19-Inch Chassis Support Runners For Engineers

Active Support with XIX 19-Inch Chassis Support Runners Maintain the integrity and longevity of your valuable rack system with XIX 19-Inch Chassis Support



2U 19 inch Din Rail Chassis Bracket Depth Adjustable

Our Rack Mount DIN Rail Kit features a simple and rugged design, making it easy to assemble with just 4 screws. Made with 2mm thickness aluminum material, it is both rugged and



19-Inch Rack & Rack Mounting Hardware , RS

Rack mounting hardware comprises the tools and components used in mounting 19 inch racks, a standardised frame used across industries.



19 Inch Rack Mount Aluminum Din Rail Kit, Depth

About this item The Rack Mount DIN Rail Chassis is the perfect solution for mounting any DIN-Rail device in a standard 19 inch cabinet or rack. With unique depth



19" Chassis Options , CP Cases UK

For use inside many of our products - including the ERack, Amazon Rack and SatRack - this chassis can be used by many markets, from the military to





How To Choose The Right 19 Inch Rack Mount Chassis

19 inch rack mount chassis are an essential component in data centers, server rooms, and other IT environments. They are designed to house and organize computer equipment, such as



Rack Depth Adapter 2-Post Support Bracket 19 Inch 23

Compatible with 19-inch, 23-inch, and 24-inch EIA rack systems. Includes complete bracket set and mounting hardware for installation. TAA-compliant, manufactured

Adjustable DIN Rail Bracket for EIA 19" Mount, 2RU, Black

This 2U rack-mount DIN kit includes screws and nuts, making it compliant with an array of DIN rail equipment, such as power supplies, programmable time switches and circuit breakers. The



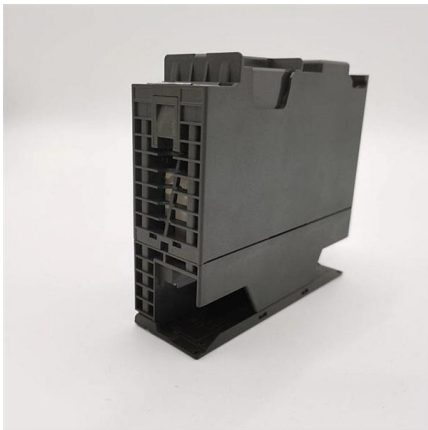
DINSpace SNAP 19-Inch Rackmount Bracket Adapter Part Number

SNAP 19-inch rackmount DIN-Rail adapter brackets allow you to mount standard 35mm DIN-Rail devices within your 19-inch rack or cabinet. Constructed of heavy-duty powder-coated 16-gauge



19 inch RACK HARDWARE

Hardware for 19 inch racks and cabinets including grounding bars, screws, nuts and bolts, and an assortment of mounting brackets.



19" chassis

The TPS 2U Chassis (BJ9900002) is a standard 19-inch rack-mount power supply chassis for industrial use, suitable for servers, telecom systems and data centers.

19 inch Rack Mount Din Rail Kit Depth Adjustable

Buy 19 inch Rack Mount Din Rail Kit Depth Adjustable Rackmount Din Rail Chassis, Aluminum Rack Mount Bracket for 19" Rack or Cabinet at Aliexpress for . Find



2U 19 inch Din Rail Chassis Bracket Depth Adjustable

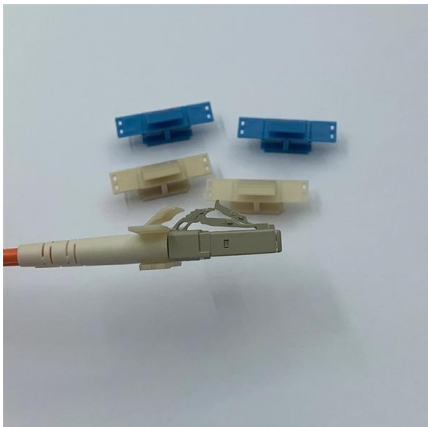
2U 19 inch Din Rail Chassis Bracket Depth Adjustable Rackmount Kit Aluminum Rack Mount Rack Rails for 35mm Din-Rail Mounted Device Ethernet Switch





19 inch rack mount brackets , Newegg

Search Newegg for 19 inch rack mount brackets. Get fast shipping and top-rated customer service.

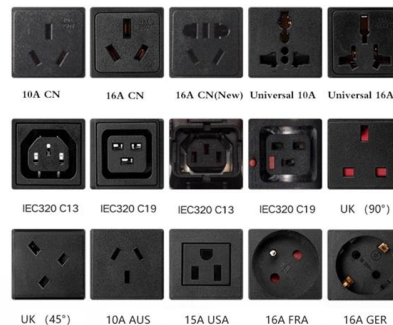


Adjustable Rack Mount Angle Bracket (200 lb Capacity)

Adjustable rack mount support angles for 19-inch and 23-inch racks. Supports up to 200 lb and adjusts from 24 to 48 inches for deep equipment installations.

Rack Mount Bracket , 19 inch , 1.00U , zr-msk-011 , racknex

With our 19 inch Rack Mount Bracket zr-msk-011 you can easily build your own server cabinet neatly under desks, shelves or on the wall.



Quality 19-Inch Chassis Support Runners For Engineers

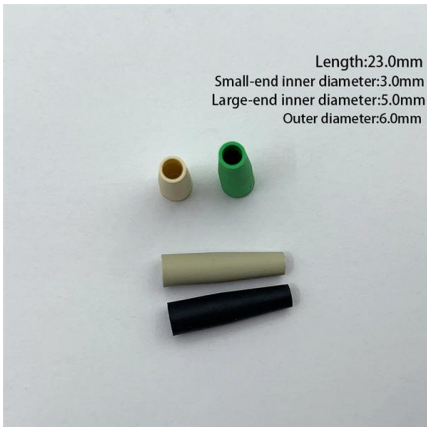
Maintain the integrity and longevity of your valuable rack system with XIX 19-Inch Chassis Support Runners. These precision-engineered L-shaped brackets are





Accessories for 19" Racks and Cabinets , Metcase USA

Range of universal 19" rack shelves, 19" front panels and fixings for mounting equipment in 19" racks and cabinets. View range here



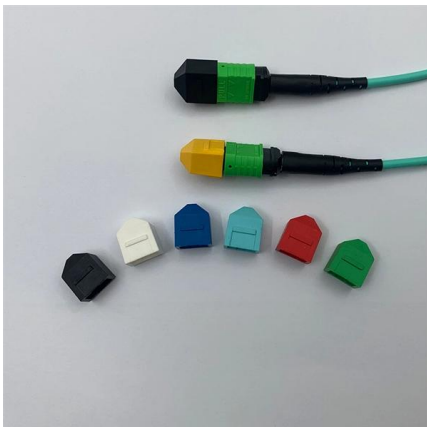
Length:23.0mm
Small-end inner diameter:3.0mm
Large-end inner diameter:5.0mm
Outer diameter:6.0mm

Prism 'L' Shaped 19-inch Chassis Support Rails Overview

Prism 'L' Shaped 19-Inch Chassis Support Rails: Reliable Heavy-Duty Equipment Support Ensure a secure and well-organized environment for your critical rack-mounted devices with the Prism 'L'

19 inch rack monitor mount brackets

Search Newegg for 19 inch rack monitor mount brackets. Get fast shipping and top-rated customer service.



Chassis Brackets & Mounts

Chassis Brackets & Mounts Home / Chassis Brackets & Mounts / Page 1 of 2 SKU: C112 CAP, WELD ON 1-1/2" \$0.30



Heavy-Duty Server Support Rails for Prism Rack Systems

Browse our website for top-quality 19-inch chassis runners designed to enhance your equipment. 19-Inch Server Racks: UK's Leading Data Centre Solutions -

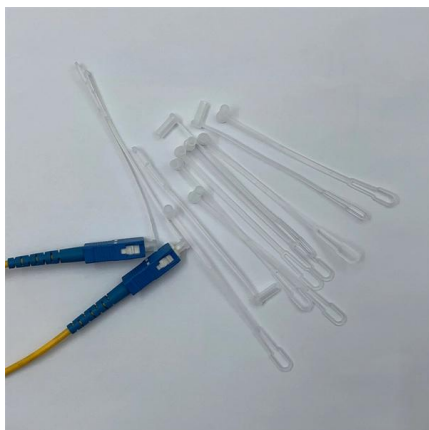
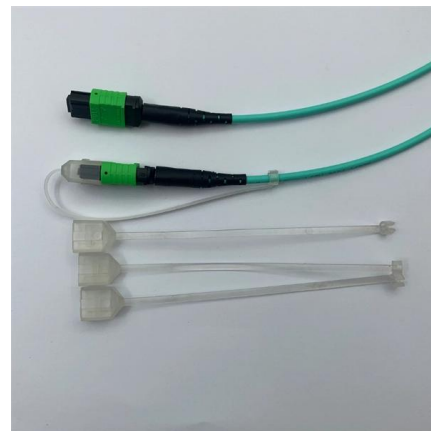


E-link 2U 19inch Adjustable Rack Mount Din Rail Chassis 35mm 19

Easily mount any DIN-Rail device in standard 19 inch rack. Unique depth adjustment feature to fit equipment in any size. The DIN-rail Rack Mount Chassis installed in standard 19inch rack cabinet or

Rack Mount Bracket , 19 inch , 1.00U , zr-msk-011 , racknex

The modular, flexible and expandable Rack Mount Brackets bring



19 inch Width Rack Mount Din Rail Kit, 35mm Height Din-Rail, Bracket

Easily mount any DIN-Rail device in standard 19 inch rack. Unique depth adjustment feature to fit equipment in any size. The DIN-rail Rack Mount Chassis installed in standard 19inch rack cabinet or



E-link 2U 19 inch Adjustable rack mount din rail Terminal

The DIN-rail Rack Mount Chassis is installed in a standard 19" rack cabinet to allow DIN-Rail mounted equipment to be rack mounted. This Rack



Contact Us

For datasheets, pricing, or custom high-speed optical interconnect solutions, please visit:
<https://www.syropy.com.pl>