

16-Port 10 Gigabit Fiber Optic Switch





16-Port 10 Gigabit Fiber Optic Switch

16-ports Full Gigabit L2 Unmanaged Fiber Switch OPT



OPT-6016 L2 Fiber Ethernet Switch provide 16-port 1000M SFP fiber ports, the SFP type is flexible according to user needing, such as 1000Base-T, 1000Base-SX,

Industrial Gigabit Ethernet Switch 16-port,

Unmanaged Industrial Gigabit Ethernet Switch 16-port, specifically engineered with an excellent tolerance capability to withstand the harsh industrial environments



Fiber Switch-Products-HiOSO Technology Co., LTD

The Foway7500-16FS series is a 16-port 10-gigabit Ethernet Fibre Channel switch, with 16 10-gigabit SFP+ optical ports (1000M or 10G SFP+ optical modules optional) connected to it and supports hot

Global IT Products & Network Solutions Provider , Black Box

Black Box provides cutting-edge IT solutions and technology products to businesses worldwide, ensuring innovative and reliable services for global digital transformation.



Light Reading

Light Reading is the leading source of news analysis for communications industry professionals.



Switch with 16x SFP, 8x10/100/1000M Base-TX or SFP,

This layer 3 Managed Gigabit switch is easy to install and optimized for growing businesses. It is also usable for VoIP and/or IP-Cameras. The switch offers 16



Layer 3 Switch Managed 48V Power Supply POE Switch 4 SFP Optical 16

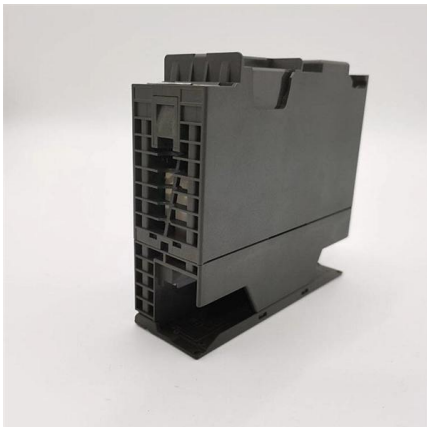
Attributes 4 Gigabit SFP, 2 Gigabit SFP, 24 Gigabit POE, 48 Gigabit POEports 10Gtransmission rate OEMbrand name POEfunction Stockproducts status Full-Duplex & Half-Duplexcommunication mode



Passive optical network



Passive optical network A fiber optic cable assembly with SC APC connectors, as commonly used to link optical network terminals to passive optical networks A

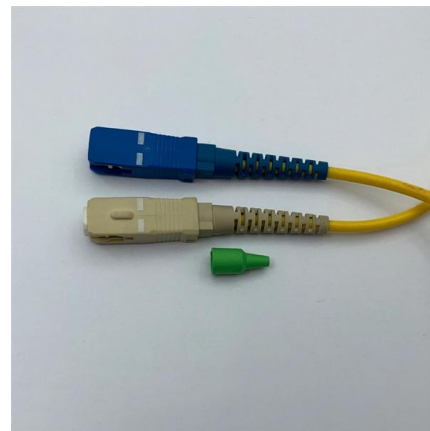


ZYXEL XMG1915-18EP 16-Port 2.5G PoE++ Switch 2x10G SFP

Key Features of ZYXEL XMG1915-18EP 2.5G PoE++ Switch 16 x 2.5G Multi-Gigabit Ports - 8 x non-PoE 1/2.5G RJ-45 and 8 x PoE++ (60W) RJ-45 ports for high-speed connectivity and power delivery.

16 Port Fiber Optic Switch

Find 16 Port Fiber Optic Switch related suppliers, manufacturers, products and specifications on GlobalSpec - a trusted source of 16 Port Fiber Optic Switch information.



10 Gigabit SFP Switches , 10 Gig SFP Switch , 10Gbs

VERSITRON's 10 Gig SFP Switches feature 4x 1G/10G SFP/SFP+ ports, providing high-speed fiber connectivity ideal for large enterprises and data centers. These



NETGEAR 8-Port Gigabit Ethernet Unmanaged

The NETGEAR 8-port Gigabit unmanaged switch provides an easy, reliable, and affordable way to expand your network connections in homes and small offices. It



Omada Omada 20-Port Gigabit Easy Managed Switch with 16-Port

Omada Omada 20-Port Gigabit Easy Managed Switch with 16-Port PoE+ - 18 Ports - Manageable - Gigabit Ethernet - 10/100/1000Base-T, 1000Base-X - 2 Layer Supported - 2 SFP Slots - 289.70 W

Online Bulk Cable Company , CableWholesale

As a premier online bulk cable company, CableWholesale carries a large inventory of computer cables, USB, HDMI, fiber optic, VGA cables, and more. Shop now!



Cisco Industrial Ethernet 3000 Layer 2/Layer 3 Series

This data sheet describes the benefits, specifications, and ordering information for the Cisco Industrial Ethernet 3000 Series Switches.



CS-34816XG - 16 Port SFP Gigabit + 8 Combo Gigabit Ports

CERIO CS-3000 Series Model : CS-34816XG is the latest powerful high-performance L2/L3 Lite Fiber Optical Switch, It built-in web-browser management interface allows the administrator to manage and



16-Port Ethernet Fiber Switch with 16K MAC & 320G

16-port Ethernet fiber switch with 16K MAC, 16 Mbit buffer, and 320 Gbps bandwidth, offering robust performance and efficient heat dissipation.



HMS Networks

HMS creates products that enable industrial equipment to communicate and share information with software and systems. In short: Hardware Meets Software(TM).



Allied Telesis IE340-20GP AT-IE340-20GP/C-980 , Cendirect

Allied Telesis IE340-20GP Ethernet Switch - 16 Ports - Manageable - Gigabit Ethernet - 10/100/1000Base-T, 100/1000Base-X - 3 Layer Supported - 4 SFP Slots - 271 W Power





UniFi® Switch US-16-XG Datasheet

The UniFi Switch with SFP+ US-16-XG is a fully managed, 16-port, 10G fiber switch that enhances network capacity by providing high-bandwidth VM Servers NAS aggregation connectivity to multiple



fiber optic switch 16 port , Newegg

Gigabit SFP Media Converter - 4 SFP to 2 RJ45 Transceiver, 10/100/1000M Fiber Optic Switch with 3KM/20KM LC/SC SFP Module (1PCS & LC 3KM Kit) Model #: HANLB0F4CJYXH7 \$ 80.99 Free

16 Port 10 Gigabit Switches (10GbE) , Comms Express

With 16 high-speed RJ45 ports and 2 dedicated 10G SFP+ uplinks, this smart-managed switch offers robust Layer 2+ / Lite Layer 3 features and full Insight



TP-Link Omada SX3016F , 16 Port 10G SFP+ Enterprise

Omada creates a highly scalable network-all controlled from a single interface.

Fiber Ethernet



MGSW-24160F L2+ 8-Port 10/100/1000T + 12-Port 100/1000X SFP + 4-Port 10G SFP+ Managed Metro Ethernet Switch



XS516TM 16-port 10G/Multi-Gig Smart Cloud Switch

Smart switch featuring 16x 10G/Multi-Gig and 2 dedicated 10G SFP+ ports. L2 network features and remote management with NETGEAR Insight.

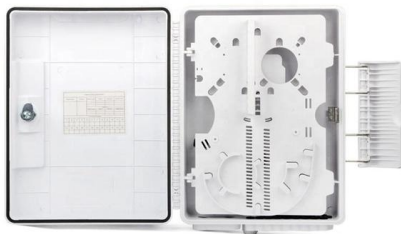
InfiniBand

Physical interconnection InfiniBand switch with CX4/SFF-8470 connectors In addition to a board form factor connection, it can use both active and passive copper (up



16-port full gigabit managed ethernet fiber switch BP

16-port full gigabit managed ethernet fiber switch BP-SWM8G8F01 The BP-SWM8G8F01 is a full gigabit managed Ethernet fiber switch. It has



16-port full gigabit managed ethernet fiber



The BP-SWM8G8F01 is a full gigabit managed Ethernet fiber switch. It has 8*10/100/1000Base-T RJ45 ports and 8*100/1000Base-X SFP fiber slot ports.



Contact Us

For datasheets, pricing, or custom high-speed optical interconnect solutions, please visit:
<https://www.syropy.com.pl>