

# **1490 Corresponding Optical Module**





## Overview

---

The 1310nm 1490nm sfp transceiver consists of five sections: the LD driver, the limiting amplifier, the digital diagnostic monitor, the 1310nm FP laser (the 1490nm DFB laser), and the PIN/TIA. 244G-RX transceiver module is specifically designed for Gigabit Passive Optical Network (GPON) system. It integrates bidirectional data transmission over one single-mode optical fibre. BlueOptics© transceivers are 100% compliant with SFP Multi-Source Agreement (MSA).

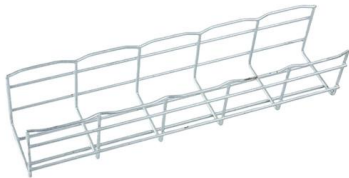


## 1490 Corresponding Optical Module

---

### 1.25G BIDI SFP TX1490nm/RX1550nm 120km Module

1.25G BIDI SFP 120km module operates at a wavelength of 1490nm for transmission and 1550nm for reception and 120km transmission distance with SMF -



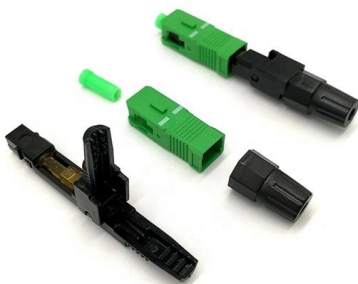
### Optical module SFP WDM GPON, Tx/Rx: 1490/1310nm, 2.5G DS /

2.5/1.25 gigabit WDM transceiver with SFP form factor. Designed to work in GPON OLT, chassis C++.



### 1000BASE-BX SFP 1310TX/1490RX 10km Transceiver Datasheet , FS

BIDI SFP transceiver module is individually tested on corresponding equipment such as Cisco, Arista, Juniper, Dell, Brocade and other brands, and passes the monitoring of FS intelligent quality



### LYNX Technik OH-TT-4-1470-1490

The LYNX OH-TT-4-1270-1290-LC dual channel SDI optical transmitter is a CWDM fiber plug in option for select LYNX Technik yellowbrik and Series 5000 products.



**GPON OLT SFP 1490/1310nm  
2.5GTx/1.25GRx Class**

The GPON OLT SFP module is specifically designed for an Optical Line Terminal



**SFP 1.25G 1490nm/1310nm Single mode  
Optical Transceiver**

The BlueOptics© BO15C4931620D SFP transceiver is a high performance, cost effective module supporting data-rate up to 1.25Gbps with 20 Kilometer link length on single mode fiber.



**GPON ONU SFP 1310nm-TX/1490nm-RX  
20km**

This GPON ONT / ONU transceiver module consists of 1310nm un-cool DFB laser, InGaAs/InP APD, Preamplifier and WDM filter in a high-integrated optical sub





### **GPON ONT Class B+ SFP module,**

Teroline GPON ONT B+ SFP module for GPON ONT applications over single mode optical fiber. The module can be used with any ONT that accepts standard MSA transceivers.



### **Is there a need for 1490 nm testing in PONs?**

Is there a need for 1490 nm testing in PONs? Introduction Point-to-multipoint passive optical networks (PONs), such as Ethernet PON (EPON), Gigabit PON (GPON) or Gigabit Ethernet PON (GEPON)

### **BiDi Transceiver SFP 1490nm-TX / 1310nm-RX, 40km, LC, SMF**

Explore our BiDi transceiver SFP module with 1490nm-TX / 1310nm-RX wavelengths, offering 40km reach over single-mode fiber (SMF) using LC simplex connectors. Ideal for cost-effective, high



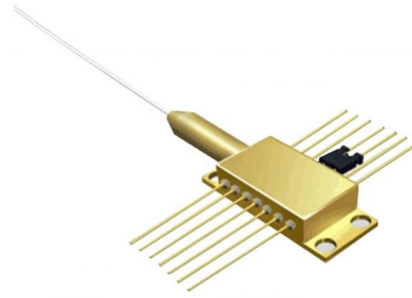
### **GPON-OLT-C+ Tx1490nm/Rx1310nm Transceiver Module**

The GPON OLT SFP transceiver is the high performance module for single fiber by using 1490nm continuous-mode transmitter and 1310nm burst-mode receiver. It is



### **Dell SFP-GE-BX10D-1490 1000BASE-BX BiDi SFP Transceiver**

Check Dell SFP-GE-BX10D-1490 Compatible 1000BASE-BX BiDi SFP Transceiver Module Data Sheet (1490nm-TX/1310nm-RX 10km DOM LC Connector) and price list on FS , buy it now!



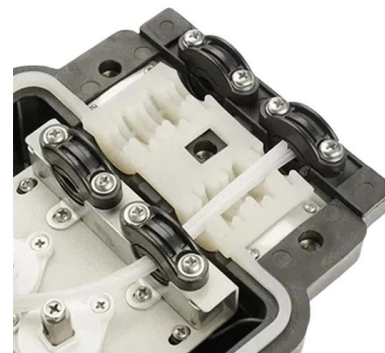
### **GPON OLT SFP 1490nm-TX/1310nm-RX Class B+ 20km Transceiver**

Note 1: Measured with 1310nm, 1.244Gbps PRBS223-1 burst-mode optical input, ER=10dB, BER=1x10<sup>-10</sup>; Single burst packet length is 40us and packet interval is 40us.



### **LYNX Technik OH-TT-8-1470-1490 Dual Channel Fiber Optic 3G-SDI**

The LYNX Technik OH-TT-8-1470-1490 dual channel SDI optical transmitter is a CWDM fiber plug in option for select LYNX Technik yellowbrik and Series 5000 products.



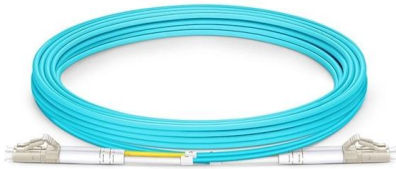
### **Optical FTTx 1310/1490/1550 nm WDM Module**

AFL's FTTx WDM Module is designed to satisfy requirements utilizing 1310, 1490 and 1550 nm bandwidths in FTTx applications. The module features a compact



## 1G SFP BiDi 60km Tx1490/Rx1310

> Home > Product > Optical Transceivers > 100M/1G Optical Transceivers > 1G SFP BiDi 60km Tx1490/Rx1310



## DATASHEET MODULETEK:SFP-GE-BIDI-20KM-T1490/R1310-x-D10

When the transmitter enable pin (TX\_Disable) is high (TTL logic "1"), the laser output is turned of. When TX\_Disable is low (TTL logic "0"), the laser will turn on within 1ms. When the trans-mitter fault signal

## SFP 1.25G Tx1310/Rx1490 10Km LC Transceiver

The module data link up to 10km in 9/125um Single-mode fiber. This sfp 1310 1490 transceiver meets the Small Form Pluggable (SFP) industry-standard package



## Cisco CWDM-SFP-1490 Compatible 1000BASE-CWDM

Cisco CWDM-SFP-1490 Compatible 1000BASE-CWDM SFP ZX Transceiver Module (SMF, 1490nm, 80km, LC, DOM) This 1000BASE-CWDM SFP ZX module is



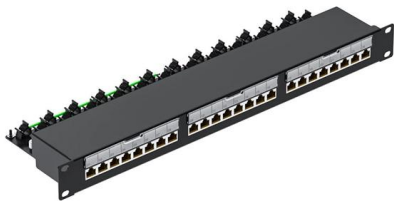
### **SFP 1.25G Tx1310/Rx1490 10Km LC Transceiver**

This sfp 1310 1490 transceiver meets the Small Form Pluggable (SFP) industry-standard package utilizing an integral LC-Bi-directional optical/sfp bidi interface



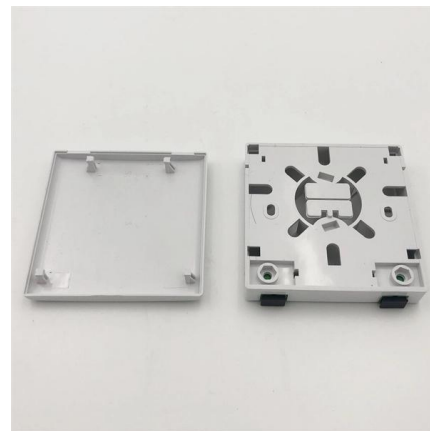
### **Cisco CWDM-SFP10G-1490 10G CWDM SFP+**

Cisco CWDM-SFP10G-1490 Compatible SFP+ 10G CWDM 1490nm 80km DOM Duplex LC/UPC SMF Optical Transceiver Module for Transmission



### **SFP 1.25G 1490nm/1310nm Single mode Optical Transceiver**

SFP 1.25G 1490nm/1310nm Single mode Optical Transceiver Description Features The BlueOptics© BO15C4931620D SFP transceiver is a high performance, cost effective module supporting data-rate



### **SFP-GE-LX-SM1490-BIDI-C , DigiKey Electronics**

Order today, ships today. SFP-GE-LX-SM1490-BIDI-C - Transceiver Module 1490nm, 1310nm LC Pluggable, SFP from Amphenol ProLabs. Pricing and Availability on millions of electronic





### **Semiconductor Optical Amplifier, 1450-1600nm, Module - Optilab**

The Optilab SOA-1490-M is a semiconductor optical amplifier with high fiber-to-fiber gain, designed to be used in general applications to increase optical launch power to compensate for loss of other



### **FFWM\_1310-1490-1550nm\_High\_Power\_WD M-Module**

1310/1490/1550nm High Power WDM Module  
FEATURES High Isolation Low Insertion Loss  
Epoxy-Free Optical Path High Reliability and  
Stability Low Profile Packaging

### **Optical Light Sources**

Optical light sources for the installation and maintenance of fiber optic single-mode and multi-mode networks.



### **Mikrotik Compatible SFP 1000BASE-CWDM 1490nm 40km DOM**

Mikrotik Compatible SFP 1000BASE-CWDM  
1490nm 40km DOM Duplex LC/UPC SMF Optical  
Transceiver Module for Transmission



### **10GBASE-BX BiDi SFP+ 1490nm-TX/1550nm-RX**

10GBASE-BX BiDi SFP+ 1490nm-TX/1550nm-RX  
100km DOM Simplex LC/UPC SMF Optical  
Transceiver Module for FS Switches



### **Optical multiplexer module (WDM) 1310/1490**

Optical multiplexer module (WDM) 1310/1490 - 1550nm Passive device designed to multiplex/demultiplex two optical signals: one at 1310/1490 nm (GPON) and another at 1550 nm (RF)

### **1000BASE-CWDM SFP 1490nm 40km Optical Transceiver Module**

Glsun SFP-1G-CWDM-1490-40, SFP transceivers are high performance, cost effective modules supporting data-rate of 1.25Gb/s and 40km transmission distance with SMF.



## **Contact Us**

---

For datasheets, pricing, or custom high-speed optical interconnect solutions, please visit:  
<https://www.syropy.com.pl>