

144 Wall-mounted Optical Distribution Box





144 Wall-mounted Optical Distribution Box

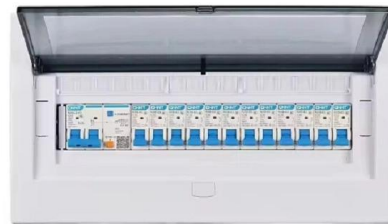


FieldSmart Fiber Distribution Hub (FDH)

Application FieldSmart Fiber Distribution Hub (FDH) 144-Port PON Cabinet provides an interconnect environment from the feeder network through the optical passive splitter to the distribution network.

OPT-X(TM) Wall-Mount SDX Enclosures

Leviton OPT-X SDX Wall-mount enclosures are a smart choice to deploy in entrance facilities, telecommunications rooms and remote network hubs that require patching, cross-connect or splicing



144 Core ODF

144 Core ODF Optical Distribution Frame (ODF) is a device used in fiber-optic telecommunications networks to connect, manage and distribute optical fibers

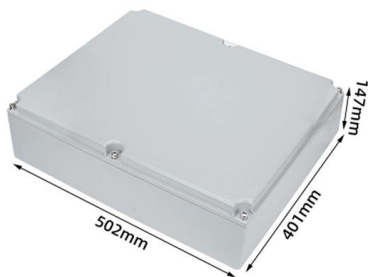
Datasheet ORM 144 Wall-mounted Optical Distribution Box

ORM 144 Wall-mounted Optical Distribution Box
FIBER OPTIC BOXES GPON READY 5G READY The
ORM 144 optical distribution box is designed for
the placement of 144 optical connectors in both



Fiber Distribution Hub

Clearfield's FieldSmart Fiber Distribution Hub (FDH) PON Cabinet family provides an interconnect environment from the feeder network through the optical passive



URM LH 144S Wall-mounted Optical Distribution Box

The URM LH 144S optical distribution box is designed for the placement of 144 optical splices indoor and outdoor. The distribution box may be complemented by



Wall mount optical distribution frame cabinet up to 144 core capacity

Ref. OD9E144 Outdoor wall type fiber optic distribution frame is mainly used for connecting the outdoor optical cables, optical patch cords and optical pigtails. It can be wall mounted or pole mounted, and



Wall Mounted 144 Core Fiber Optic Cabinet ODC Pole

High quality Wall Mounted 144 Core Fiber Optic Cabinet ODC Pole Fiber Distribution Cabinet from China, China's leading SMC Cabinet Wall Mounted product, with

Product Photography



FWB Fiber Distribution Box Wall-Mounted Type-AOA Tech

FWB series Fiber Distribution Box Wall-Mounted Type, also called ODF wall-mounted distribution cabinet, is available for small capacity communication

PS-3 Fibre Optic Distribution Box

Wall mounted in controlled environments. Termination of up to 144 fibres, 6 cable entries. Front access to splice trays and adapter plate.



BDWP131CF1C08C7S00 , GEN III Series Indoor Cabinets 144 F, wall

The OptiTect® Indoor Local Convergence Cabinet, Gen III Series family delivers everything needed to distribute up to 432 distribution fibers for FTTx applications. All cabinets feature intuitive fiber



Wall Mount Fiber Optic Enclosures , Multilink

Multilink wall mount fiber distribution boxes include solutions for patch cable interconnection or a combination of splicing and patching. We separate these products into multiple groups based on

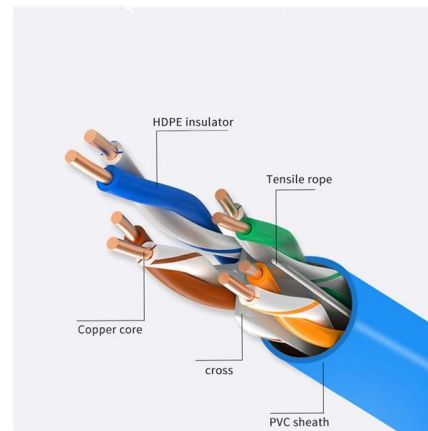


144 Fibers Distribution CrossConnect Cabinet, Floor Mount, IP65 for

Cross Connection Distribution Cabinet Cross Connection Distribution Cabinet is designed for a cross connection between telecom feeder cable and customer cable. It is normally in a floor-standing or

144 core ODF Wall Mounted Optical distribution Frame

144 core ODF Wall Mounted Optical distribution Frame Rated 5.00 out of 5 based on 1 customer rating (1 customer review) ?? 700.00 SR



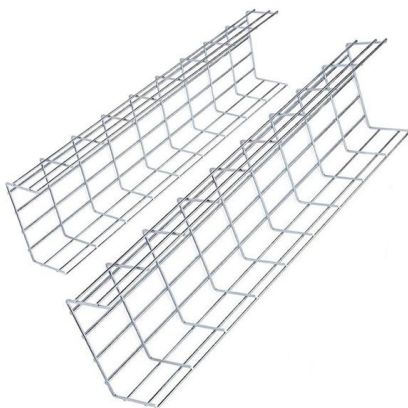
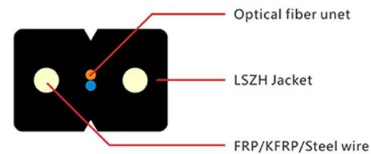
144 Port Wall Mount Fiber Patch Panels - Fiber Savvy

We offer Wall Mount Fiber Patch Panels with NEMA 1 and 4 rated up to 144 Ports. The Network compartment has a removable and lockable internal door with capacity for splice trays, cable

Optical Distribution Frames (ODF)



Explore optical distribution frames (ODF) with efficient distributed chassis solutions at CommScope



144 Cores ODC Cabinet, FTTH Distribution Cabinet

Hongyou produces all kind of 144 Cores ODC Cabinet, Fiber Cross Connection Cabinet in large quantity with cost-effective price.

URM SH 24C M Wall-mounted optical distribution box

The URM SH 24C M optical distribution box is designed for the placement of 24 optical connectors indoors and outdoors. The distribution box may be



FDH 144 Fiber Distribution Cabinet

Wall Mount Fiber Management FDH 144 Fiber Distribution Cabinet Overview The CF Fiber Distribution Hub (FDH) indoor wall mount cabinet is designed to organize and manage fiber optic cables and



Datasheet POR 48 Wall-mounted Optical Distribution Box

Wall mounted fiber optical box is designed for the placement of up to 48 optical connectors indoor. Optical cables can be lead in/out from upsite or downsite. Adapters plate is selectable and splicing



PS-3 Fibre Optic Distribution Box

Wall mounted in controlled environments. Termination of up to 144 fibres, 6 cable entries. Front access to splice trays and adapter plate

ODF-E-144 8U optical distribution frame 144 Cores

144 Cores Optical Distribution Frame Overview
Fiber Management Tray also called ODF Distribution Box, Integrated Splicing and Distribution ODF. It is mainly used



24, 48, 96, 144 Core Wall Mount Odf Fiber Delivery

We are a 24, 48, 96, 144 Core Wall Mount Odf Fiber Delivery Point (fdp) Metal Fiber Enclosure Wall Box Manufacturer. We supply fiber optic panels in competitive



Wall mount optical distribution frame cabinet up to 144 core capacity

Outdoor wall type fiber optic distribution frame is mainly used for connecting the outdoor optical cables, optical patch cords and optical pigtails. It can be wall mounted or pole mounted, and facilitates the



ODF-E-144 8U optical distribution frame 144 Cores

Fiber Management Tray also called ODF Distribution Box, Integrated Splicing and Distribution ODF. It is mainly used for cable inlet, grounding and fixing and the



Outdoor Fiber Optic Cabinet Fiber Distribution Cabinet 144 Core

capability of splicing, storage, and fiber cable distribution. Fiber optic cabinet, max up to 12/24/48 trays, 12 ports one tray, total 144/288/576 ports, FC or SC adapter can be installed.



Contact Us

For datasheets, pricing, or custom high-speed optical interconnect solutions, please visit:

<https://www.syropy.com.pl>