

12-core Ic rack-mount terminal box





12-core lc rack-mount terminal box

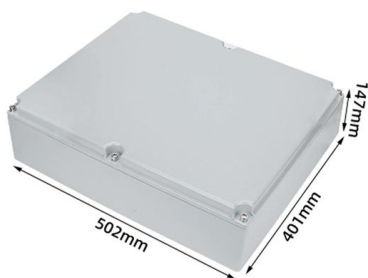


Fiber Terminal Box, 12* Port Optical Fiber Distribution Hub

This Fiber Terminal box is for indoor/outdoor application, with 12 fiber termination capacity (24 fiber for LC connectors). It is usually located in the user access point,

Rack-mounted Fiber Optic Terminal Box

The fiber optic terminal box is designed for FTTx applications, accommodating at least 4-16 users. It provides ample space for splicing, splitting, storage, and cable

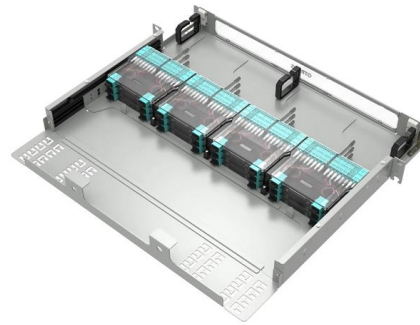


Rack Mount Fiber Termination Box With 12 Port, 12

The 12 port rack mount fiber patch panel is designed to support 2pcs separate 6 SC or LC adapters on the front and can also be pre-terminated with 12-strand single

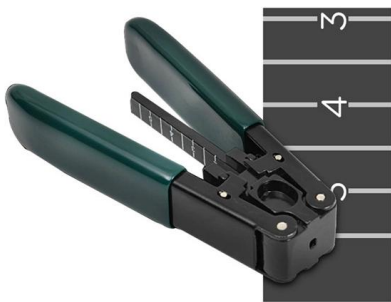
12 port Fiber Optic Patch Panel SC LC 19? 1U Rack

Introduction to 12 port Fiber Optic Patch Panel 12 port Fiber Optic Patch Panel SC LC 19? is designed to install 12 pcs SC LC ports fiber optic adapters and pigtails,



CFB-1012C/LC 12 Ports LC Fiber Optic Box for 19 Inch Rack Mount

FTTH Terminal box is used as a termination point for the feeder cable to connect with drop cable in FTTx communication network system. It integrates fiber splicing, splitting, distribution, storage and



Metal 8 Ports Fiber Terminal Box for 8 Core Splice and

The 8 ports terminal box supports a variety of front adapter panel, allowing termination of SC, LC, FC, and ST fiber optic connectors, and accommodates up



LC-OM3 12 Duplex 24 Port Fiber Enclosure Box

Product Description Rack Mount LC-OM3 Kit 24 Core LGX Panel Fiber Enclosure - Complete Accessories Set Including 2 Splice Trays, 24 Strand LC MultiMode



12 Core Duplex Ports LC Terminal Mounting Housing

We are a 12 Core Duplex Ports LC Terminal Mounting Housing Fiber Patch Panel Manufacturer. We supply fiber optic panels in competitive cost and short lead



SC/LC/Connectors FTTH Fiber Terminal Box 8/12/24/48/

Product Description High Capacity & Flexible Configuration: This distribution box supports flexible fiber capacity from 4 to 48 cores, installable with a 1x48 or two

Amazon : High-Performance 24 Duplex 48 Port LC

About this item 1.Versatile Fiber Kit: Includes a 24 Duplex LC-OS1 rack-mounted fiber enclosure box with 2 splice trays, spool, and 48 strands of 1-meter LC



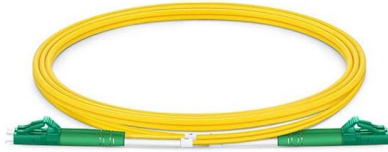
12 Duplex 24-Port LC-OS1 Fiber Rack Mount Enclosure

12 Duplex 24-Port LC-OS1 Fiber Rack Mount Enclosure Box with Splice Trays, Find Details and Price about Fiber Optic Splice Closure joint closure 48 core from 12



SUN-ODB-RM2C Fiber Optic Terminal Box

Sun Telecom's SUN-ODB-RM2C series fiber optic terminal boxes are widely applied in Local Central Office. These are used for fiber optic cable fixation, protection,



Rack Mount Fiber Termination Box With 12 Port, 12

The 12 port rack mount fiber patch panel is designed to support 2pcs separate 6 SC or LC adapters on the front and also be pre-terminated with 12-strand single

HJ FTTH Fiber Distribution Box 24 Core IP65 Wall Mount Optical Terminal

HJ FTTH Fiber Distribution Box 24 Core IP65 Wall Mount Optical Terminal with SC LC Adapter for Outdoor Use No reviews yet Hai'an Huijue Network Communication Equipment Co., Ltd. 1 yr



12 Cores Rack Mounted Fiber Optic Terminal Box As

It is available for the distribution and terminal connection of various kinds of optical fiber system. These units are available in sizes that fit the most common distribution requirements.



12 Duplex 24-Port LC-OS1 Fiber Rack Mount Enclosure

Product Description Rack Mount LC-OS1 Kit LGX Panel Fiber Enclosure - Set of Accessories is Complete Include Splice Trays 24 Strand LC SingleMode Pigtail +



12 Port Sliding Fiber Patch Panel For SC LC Option-

This rack mount 12 port fiber patch panel supports LC and SC adapters, suitable for rack in FTTH and data center applications.

FYBOPTWU-12 Singlemode 12 Port SC-UPC Fiber

Buy FYBOPTWU-12 Singlemode 12 Port SC-UPC Fiber Optic Rack Mount Enclosure Box & Splice Trays Fiber Cables Kit (Include Pigtail & Couplers), 12 Core LGX



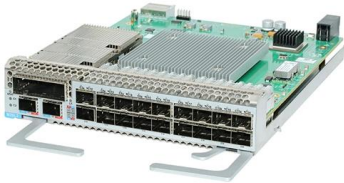
FTTH 12-24 core SC/FC/ST/LC rack mount Splicing

Fiber optic patch panel is an integrated unit for fiber management, Foclink offer wall mounted fiber optic patch panel and rack mounted fiber optic patch panels, these



12 Core Fiber Optic Distribution Boxes for FTTH

With a maximum capacity of 12 cores and the ability to accommodate 3 pieces of 8-13mm cables, it provides ample space for your connectivity needs. What sets it



Haile 12-Port 12-Core Terminal Box P2A-12M-LC - LC Multi-Mode

The Haile 12-port 12-core terminal box P2A-12M-LC is an efficient and versatile fiber optic solution. It features a 1U pull-out rack design for easy installation, perfect for space-constrained environments

12 Port SC LC 19? 1U Rack Mounted Fiber Termination

Introduction to 12 Port Fiber Termination Box 12 Ports SC LC 19? 1U Rack Mounted Fibre Optic Patch Panel is designed to install 12 pcs SC fiber optic adapters and



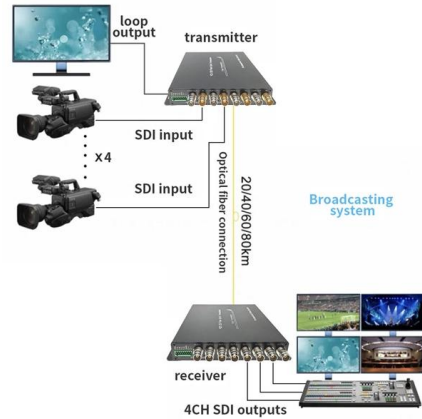
FTTH 12 24 48 Core Sc/FC/St/LC Rack Mount Splicing Fiber Optic

FTTH 12 24 48 Core Sc/FC/St/LC Rack Mount Splicing Fiber Optic Patch Panel/Termination Box/ODF ODF unit box is a high-density, high-capacity design product, with good looks generous, reasonable



Amazon : Duogalia LC-MM 12 Duplex 24 Port Rack Mount Enclosure Box

LC-MM 12 Duplex 24 Port Rack Mount Enclosure Box with Splice Tray Multimode LC-OM2 Kit (Includes 1.2 Meter Pigtail and 12PC Coupler)



Fiber Optic Patch Panel 1U,Rackmount,12 Port Loaded

- Fiber input: 4
- Adapters output: 12core or 24 core or 48 core
- Suitable for different adapter (SC simplex, SC duplex, LC duplex, ST simplex, FC simplex)
- The slide

FTTH 12/24 Core Sc/FC/St/LC Jack Rack Mount Steel

FTTH 12/24 Core Sc/FC/St/LC Jack Rack Mount Steel Fiber Optic Distribution ODF with Splicing Tray Termination Box/Patch Panel/ODF, Find Details and Price



LC-OS2 6 Port 12 Core Rack Mount Fiber Enclosure LC,

Comprehensive Accessory Kit: VANDESAIL Fiber Rack Mount Enclosure Box kit includes 12 single-mode LC pigtails, each fabricated from premium fiber materials



Contact Us

For datasheets, pricing, or custom high-speed optical interconnect solutions, please visit:

<https://www.syropy.com.pl>