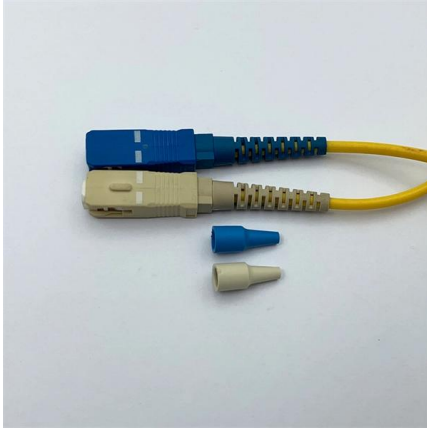


1010 Channel Steel Cable Tray





1010 Channel Steel Cable Tray

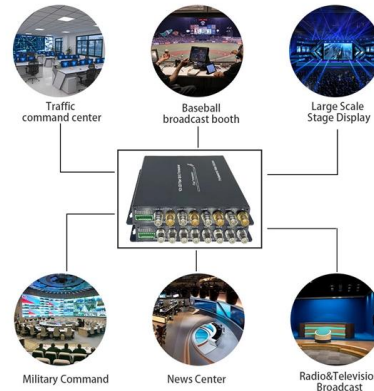


100mm Cable Tray x 1 Metre - Medium Duty PG Steel

100mm cable tray - 1 metre length, medium duty, pre-galvanised steel. Industry standard punched tray with 25mm flange. Fast UK delivery.

OBO Bettermann BKRS 1010 FS (6062000) , Industry-Electronics

Product information for OBO Bettermann 6062000: Heavy-duty, walkable cable tray system BKRS with bottom perforation, 100 mm side height.



OBO-Datasheet

Item no. 6062000 Heavy-duty, walkable cable tray system BKRS with base perforation, in 100mm side height. The cable tray has connector perforations on both sides.

High-Quality Cable Tray Systems , Light, Medium

Explore our premium cable tray systems at Direct Channel. Available in light, medium, and heavy-duty options, with pre-galvanized & hot-dipped finishes.

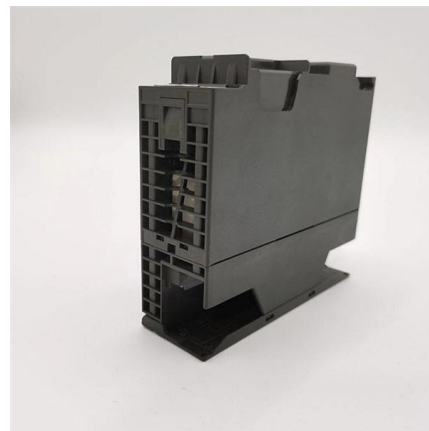


Product Catalogue Cable Management Solutions

With over 20 years of experience T& B Cable Tray provides a complete solution in cable management systems including design, manufacturing and technical support by offering a complete solution for

Unistrut P1010H

Features o Manufactured from steel bars, and after machining operations are completed, zinc plated (ZP) and hot dipped galvanized (HG) nuts are case hardened o Hardening assures positive biting action



10 Ft Cable Trays Black Powder Coat 1024 , ShowMeCables

10-Foot Wire Mesh Cable Trays with Black Powder-Coat Finish Our 10-foot wire mesh cable tray straight sections now come with the option of a durable black powder-coat finish that protects the tray from





Full cable tray systems specification document

H. Cable Tray Supports: Shall be placed so that the support spans do not exceed the maximum span indicated on drawings. Supports shall be constructed from 12 gauge steel formed shape channel

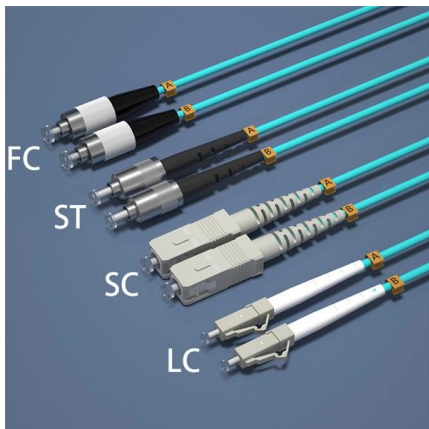


Steel Cable Tray , Cable Tray Support

The cable tray system features slot patterns allowing for optimal and efficient positioning of equipment and easy access for cable ties and other fixings. Available in 50 and 100 mm heights, with other

Heavy Duty Cable Tray - Unitrunk

The patented UniKlip® system enables 3X faster installation speeds. Available finishes include: Pre-galvanised to BS EN 10346:2015 (standard references



Kable Kontrol® Wire Mesh Cable Tray

Kable Kontrol Cable Trays are not only great for Smaller Commerical projects, but also for industrial applications. In fact, our cable trays are specifically designed to



Cable Trays Market

Cable Trays Market is segmented By Material Used (Low-carbon Steel, Stainless Steel, Aluminum Alloy, and Fiber Reinforced Plastic) and Product



Cable Tray, Steel Channel Cable Tray, Steel Cable

Description In the electrical wiring of buildings, a cable tray system is used to support insulated electrical cables used for power distribution, control, and



Straight Channel Cable Tray

The FiberRunner® 6x4 Channel can be used with fittings and brackets to design a routing system to segregate, route, and protect fiber optic and high-performance copper cables. The cable routing



Steel Cable Tray , Strong And Reliable Cable

Built from high-quality materials, these trays provide excellent support and organisation for cables, ensuring safety and efficiency in any setup. Available in





Armorduct Systems Ltd , Manufacturing Cable

Armorduct Systems are a UK manufacturer of steel cable management systems including cable trunking, tray, basket, floor boxes, power track & more. Wide

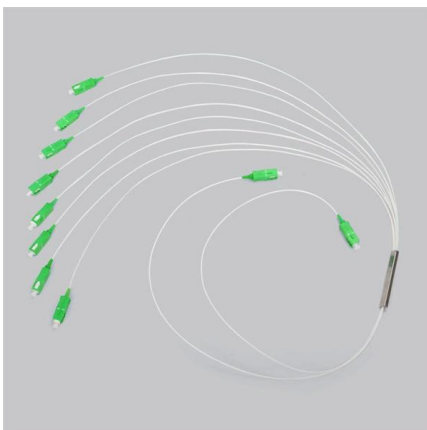
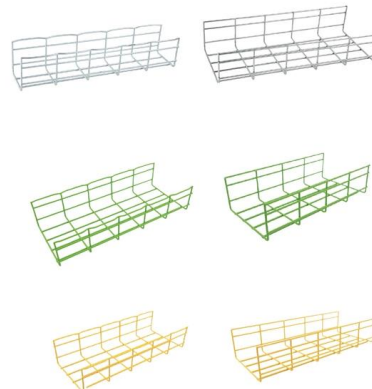


Steel Cable Tray

Crafted from high-quality materials, our cable trays offer durability and reliability across all tiers. Browse our collection now and enhance your cable management

Unistrut Channel

Unistrut channels are versatile support systems used in cable tray installations, piping frameworks, HVAC, and solar mounting structures. Known for their



10 Foot Cable Trays

Kable Kontrol's professional quality Galvanized Steel Wire Mesh Cable Management Cable Trays for your building's wire management needs. Our standard and



610 Series Steel Cable Tray Components , Snake Tray

Universal Cable Runway Support backbone and horizontal cables in the telecommunications or equipment rooms and cross-connects on racks or



CABLE TRAY

SFSP PRODUCTS SFSP produces a variety of products ranging from cable management systems; cable trays, cable ladders, basket trays, trunkings and support systems, to mechanical cladding

300mm Cable Tray (12 Inch) - Heavy Duty PG Steel , 3m

Shop 300mm heavy duty cable tray - 3m length, PG steel, 12" wide. Pre-punched, industry standard, Unistrut compatible. Fast UK delivery.



Steel Cable Tray , 610 Series Cable Runway , Snake Tray

Steel cable tray is high strength and accommodates needs for high capacity applications in data centers, telecommunication rooms & highly cabled facilities.



Heavy Duty Cable Tray Systems: Ultimate Guide

Durability and Strength: Heavy duty cable trays are constructed from high-quality materials such as stainless steel or galvanized steel, ensuring they



Eurostrut Cable Trays , cable tray, cable route and

Cable trays for industrial and marine use. Includes distribution trays, cable routes and NATO-type models. Request a quote directly via our webshop.

Cable Trays and Accesories

SFSP cable trays and accessories from SFSP are manufactured from steel sheets in accordance with BS EN 10130/BS EN 10131/ BS EN 10051, complying with BS



1075KW HH ESS

Cable Trays

These trays, meeting sector-specific needs with a robust structure, feature a covered design, interlocking splicing options, and wire tray structures to facilitate high



**Cable tray type BKRS 1010 FS /3m/
6062000**

Wall channels Underfloor channels Channels
Angles Flat bars Threaded rods Z-shapes Pins,
anchors, sleeves, screws Bolts, nuts, washers
Cans Accessories for metal cable trays Other
sheet metal

Product parameters



Contact Us

For datasheets, pricing, or custom high-speed optical interconnect solutions,
please visit:
<https://www.syropy.com.pl>