

100kW remote power supply for railway communication





100kW remote power supply for railway communication



Assessment of the Risk of Failure in Electric Power

This paper provides a reliability analysis of selected components in the electrical power supply systems used for railway traffic control equipment. It

Power Supplies for Railway Applications , TDK-Lambda

With features like high efficiency, compact size and rugged construction, our power supplies provide stable and reliable performance crucial for railway systems, including signalling, communication and



Railway Traction Power Supply

Hitachi Energy takes care of design, engineering, construction and commissioning of complete traction power supply systems for both long distance rail and mass

Power supply for Railway Signalling system

Signalling Power System Power Supply Design
Tool Power supply for signalling systems require special considerations because Modern rail transport system depends the performance of which affects



(PDF) Assessment of the Risk of Failure in Electric

Schematic diagram of the troubleshooting process. Monthly count of registered power supply failures for railway traffic control devices in 2022. Pareto

dev Ifuse

Hier sollte eine Beschreibung angezeigt werden, diese Seite lässt dies jedoch nicht zu.



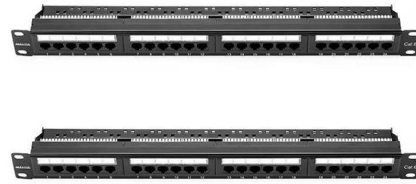
Electrical Railway Power Supply Systems for High-Speed Lines: From

This chapter aims to provide a general but comprehensive overview of the evolution of electrical railway power supply systems (ERPSS) for high-speed railway lines. To this end, the



Power supplies for railway infrastructure , Phoenix Contact

Uninterruptible power supplies for remote diagnostics With our QUINT system, you are ready to digitalize your railway technology! Integrate our power supplies, uninterruptible power supplies, and

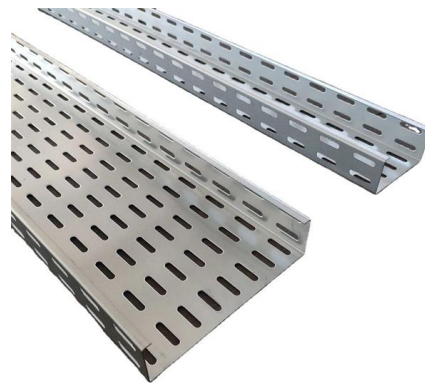


Power supplies for railway system

These railway DC/DC converters feature compact size, low ripple noise and excellent EMC performance, and are designed to comply with higher isolation requirements

Power Supplies for Railway Data Communications

Modern railway infrastructure demands robust power solutions for all railway systems, signaling, internet, data transfer, control, communication units and high-power auxiliary or mains supply.



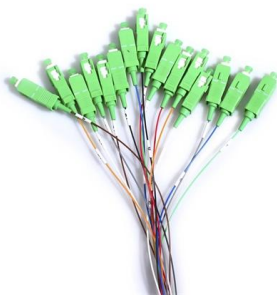
Power Supply Systems for Railway Signaling: The

Railway signaling is often viewed through the lens of sophisticated relays, track circuits, and modern communication systems. However, the true



Assessment of the Risk of Failure in Electric Power Supply Systems

This paper provides a reliability analysis of selected components in the electrical power supply systems used for railway traffic control equipment. It includes rectifiers, controllers, inverters, generators,



WS Railway-Components

Tested protection and switching devices from the SENTRON portfolio ensure reliable low-voltage power distribution in infrastructure and railway applications. The perfectly coordinated components offer

Traction Power Supply

From a single product to complete solutions for 1AC and 2AC traction power supply applications. Our broad product family provides you with an optimal solution for both indoor and



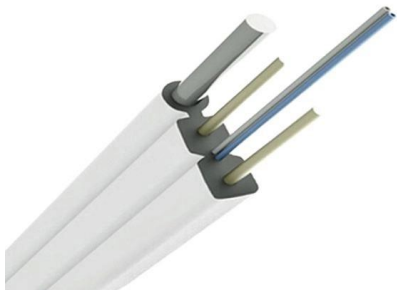
Application of energy routers in railway power supply

In the power supply systems of railways (PSSR), which include distributed generation systems (DG), intelligent technologies for controlling



Electric Power Derivation From 25 kV AC Overhead

This paper has presented a feasibility study of a power supply technical solution for deriving electric power from 25 kV AC, representative of an



Rail Power Systems

RPS is a general contractor for railway infrastructure and a leading international supplier of railway electrification and power supply systems.

EN 50155: The Essential Standard for Power Supply

Learn about EN 50155, the foundational standard for power supply design in railway applications, covering performance, testing, and safety



Electrical Railway Power Supply Systems for High-Speed Lines: From

References (50) Abstract This chapter aims to provide a general but comprehensive overview of the evolution of electrical railway power supply systems (ERPSS) for high speed-lines.



Flyer-Railway Power Supply_20180103

Besides measurement and control function, RTU of railway pad mounted transformer also supports remote signal, remote measurement and control, built-in route and communication management at



Innovative Integrated Solution for Monitoring and Protection of Power

This paper describes an innovative integrated solution for monitoring and protection of the power supply system of electric traction. The development of electronics devices, new possibilities to communicate

Power Supplies for Railway Applications

Power supplies for railway data communication systems must meet strict EN 50155, EN 61373, and EN 50121-3-2 standards. RECOM offers rugged, efficient DC/DC converters for rolling



EN 50155: The Essential Standard for Power Supply

Standards are essential for the design and development of safe and reliable power supply products, especially for transportation systems such as railways.



Power supplies for Railway Applications , PULS

PULS power supplies are now utilised within approximately 800 electrical cabinets all over Switzerland for the control of power lines for the trains, installed along the

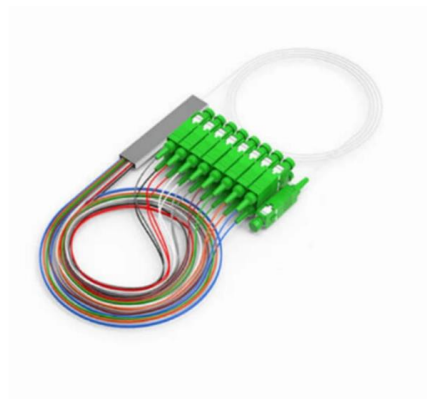


EN 50155: The Essential Standard for Power Supply Design in

EN 50155 is a European standard that covers electronic equipment used on rolling stock for railway applications, including power supplies.

Wireless Power Supply for Railway Vehicles , Institute of Electrical

Research at IEW focuses on the development of highly efficient contactless power transmission systems by optimizing coil arrangements and reactive power compensation as well as the design of the



Innovative Integrated Solution for Monitoring and

The solution of monitoring and protection presented are composed of a hardware-software structure with Global System for Mobile Communications



Contact Us

For datasheets, pricing, or custom high-speed optical interconnect solutions, please visit:

<https://www.syropy.com.pl>