

# **100Mbps fiber optic router disconnected**





## Overview

---

This should force it to download the newest available from Microsoft, then you should manually update from there using your motherboard's latest network driver that you can get from their website. After that, I plug the cable back to the main computer and it magically accepts the 1Gb speed. Fiber optic networks are celebrated for their speed and reliability, but even the best systems can encounter problems. When issues like signal loss, slow speeds, or intermittent connectivity arise, systematic troubleshooting is key.



## 100Mbps fiber optic router disconnected

---



### Fiber Optic Troubleshooting: Expert Guide for Common

Troubleshoot fiber optic issues like a pro with our expert guide. Resolve common problems and ensure seamless connectivity.

### LAN speed keeps dropping down to 100Mbps from 1000Mbps and

Hello, I experience quite often that the speed of the wired connection between my router (AX72) and my unmanaged gigabit switch (TL-SG1008D) got limited in speed.



### My router is dropping connections, how to fix this?

If your router is not performing properly (freezing, automatically rebooting, disconnecting etc.), this could be happening for a number of reasons. 1. Ensure the router is in a well ventilated area. If the

### Wi-Fi Signal Drops and Connection Issues: 100

Having trouble staying connected? Here's a large collection of tips to likely fix those common Wi-Fi signal drops and connection issues.



### Why Your Router Keeps Shutting Off Randomly and

Quick Fix #1: Let Your Router Breathe Dust off your router's vents and make sure it can get enough air to avoid overheating. The router is the beating



### Router dropping LAN port to 100mbps with no clear reason

So it looks like the culprit was the Cat 6 cable running from my router to the keystone jack that goes to the basement. I swapped it with a flat Cat7 I had as an extra over the weekend and not



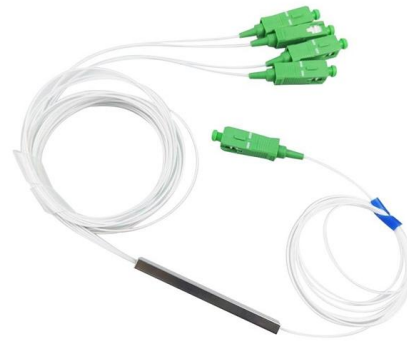
### My router is dropping connections, how to fix this?

My router is dropping connections, how to fix this? If your router is not performing properly (freezing, automatically rebooting, disconnecting etc.), this could be happening for a number of reasons.



## Diagnose and Troubleshoot Damaged Fiber Optic Cables

Fiber optic cables are the backbone of modern high-speed internet, television, and communication systems. Designed to transmit data using light pulses, these



## 5 Reasons Why Your Internet Keeps Disconnecting and

We go deeper into each of these potential internet issues and how you can fix them further down the page. Click on an issue to auto-scroll to its solution.

## What if my Router Speed is capped at 100 Mbps?

Some customers may report the speed is limited to 100 Mbps when connected to the TP-Link router, while the speed is much faster and can reach up



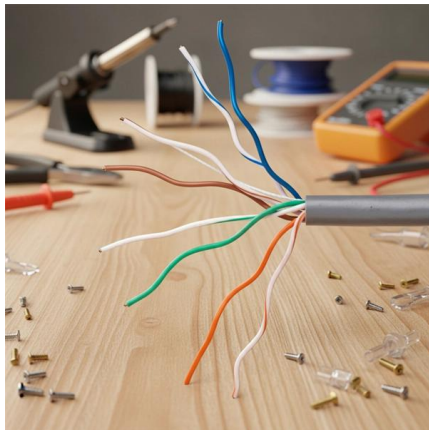
## Speed stuck at 100Mbps on 1Gb Fibre

I have the same issue. I am absolutely sure everything I have is capable of 1Gb speed but my computer somehow sets the speed back to 100Mbps after a while. This happens every day.



### Gigabit Router WAN port does not connect above 100 Mbps : r

I have just upgraded my old ADSL internet connection to Gigabit fiber optic. I have a TP-Link Archer C80 which was previously plugged into the slow ADSL modem without issue. When I plugged it into the



### Troubleshooting Common Problems with Fiber Media

Fiber media converters are powerful tools that bridge the gap between Ethernet and fiber-optic networks. These devices are widely used to

### Speed stuck at 100Mbps on 1Gb Fibre : r/PCsupport

Speed stuck at 100Mbps on 1Gb Fibre. So I have been trying to fix this for the last week . - I have had 1Gb Fibre installed. - I installed a TP-Link 2.5 Gigabit PCI Express Network Adapter ( TX201 ). Issue.



### router

You don't have a lot of options until you eliminate their end as the problem. Fiber must be transported at the same frequency at both ends.



## No Internet Connection , Verizon Internet Support

How do I fix a connection issue with Verizon High Speed Internet (DSL)? Turning your router off and on solves most connection issues: If rebooting your router



I tested this cable without router and get 300mbps in my desktop, but when I connect the cable in my router, the lan and wifi connections are limited to 100mbps.

## Why Does My Router Keep Disconnecting? 9

Why does my router keep disconnecting? In this blog post, explore the common reasons why your router keeps disconnecting and provide practical



## TP-Link Router Keeps Disconnecting , Troubleshooting

If your TP-Link router keeps disconnecting wirelessly but wired devices stay connected, try these fixes to stabilize your Wi-Fi.





### Router is disconnected?

Kids said printer wasn't working. Looks like it's a Google fiber issue. Google fiber app says "your router is disconnected. It looks like your internet is up and running but your router isn't. "

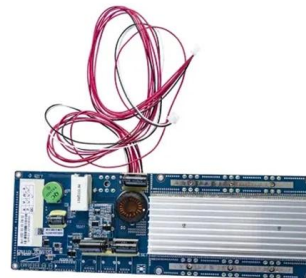


### Fiber Network Troubleshooting - Common Issues & Fixes

Learn how to troubleshoot fiber networks. Identify common issues like high loss, dirty connectors, and signal drops, with practical solutions for optical links.

### Gigabit Ethernet switch from 1Gbps to 100Mbps back

As I tried to delete it, when I did, the network speed immediately switched back to 100Mbps, and when I set the OP again, the network speed went



### router

I am using a FritzBox 5490 Fiber modem. The FritzBox is connected via a 1 GBit/s ethernet cable to my PC. The problem seems to be the connection between the FritzBox and the



Learn how to troubleshoot fiber optic cables with common problems, a step-by-step process, essential tools, and proven solutions for stable network performance.



### Frontier Internet troubleshooting

Frontier Speed Test to gauge performance If your internet connection is spotty or lagging, we recommend you conduct a speed test to see your download and upload speeds, latency, and

### Internet Keeps Disconnecting? 7 Quick Fixes That Work

A stable and consistent internet connection is necessary for our personal and professional lives. It provides entertainment, communication and even the ability



### Why is my ethernet cable speed is capped at 100 mbps when the

The router was recently changed so its definitely not the problem, the ethernet cable is cat5e so it should support up to 1gb. Cable has been sitting inside wall unmoved for like 8 years so I dont think its



### Speed stuck at 100Mbps on 1Gb Fibre



Sometimes I unplug the cable from my computer and plugs it into a laptop, it makes the router recognize the laptop accepts more speed and unlock the 1Gb speed.



### **why does my wifi keep disconnecting? Quick fixes and tips**

why does my wifi keep disconnecting? Quick fixes and tips When your WiFi keeps dropping, it almost always comes down to one of three things:

## **Contact Us**

---

For datasheets, pricing, or custom high-speed optical interconnect solutions, please visit:  
<https://www.syropy.com.pl>