

100G Single-Mode Fiber LCFC



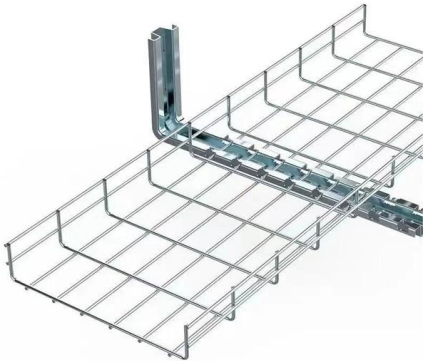


Overview

The 100G QSFP28 Single Mode Fiber (SMF) module is your essential high-speed, long-distance champion. This compact powerhouse solves critical connectivity challenges, enabling robust 100Gbps data transfer far beyond the reach of multimode optics. QSFP28 transceiver that supports 100G connections up to 10 km using single-mode fiber with a duplex LC UPC connector. Power Consumption CLASS 1 LASER PRODUCT, IEC/EN 60825-1:2014 Do not look into the ends of the fiber optic cable or SFP module while converters are. ● Hot-swappable input/output device that plugs into a 100G Gigabit Ethernet Cisco QSFP port.



100G Single-Mode Fiber LCFC

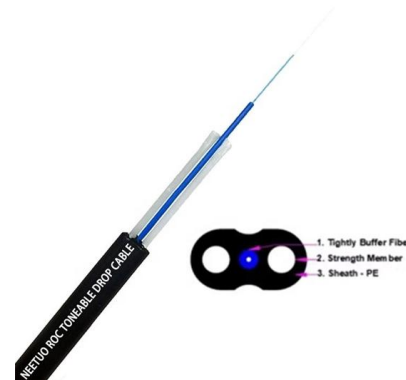


QSFP28 FR1 100GbE Universal Optical Transceiver

The 100G QSFP28 FR1 optical transceiver transmits data over single mode fibre at a distance of up to 2km. The transceiver operates on 1 wavelength and works in

Understanding 100G Ethernet

The real change to 100G LR4/LR10 is that the optical transceiver divides lanes based on light wavelengths (instead of physically separating the

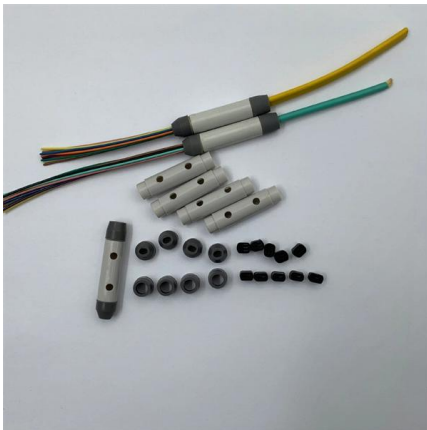


Arista 100G Transceivers and Cables: Q&A

Enabling FEC with QSFP-100G-LR4 optics on Arista switches can allow for links beyond 10km with single mode fiber. However, as this is not fully characterized, customers are advised to measure the

100GbE QSFP28 LR4 Optical Transceiver

Mellanox® 100Gb/s optical transceiver is designed for use in 100 Gigabit Ethernet links on up to 10km of single mode fiber. It is also qualified for use in Mellanox InfiniBand EDR end-to-end systems. The



1m (3.3ft) LC to LC (UPC) OS2 Single Mode Simplex Fiber Optic

1m (3.3ft) LC to LC (UPC) OS2 Single Mode Simplex Fiber Optic Cable, 9/125 μ m, 40G/100G, Bend Insensitive, Low Insertion Loss - LSZH Fiber Jumper Cord

100G QSFP28 Single Fiber (BiDi) Modules: Technology, Benefits

Understand 100G QSFP28 single fiber (BiDi) modules--how they work, benefits vs. duplex 100G, deployment considerations, and recommended LINK-PP solutions. Practical guide for



100G Singlemode Armored Fiber Cable, LC-LC, 9/125,

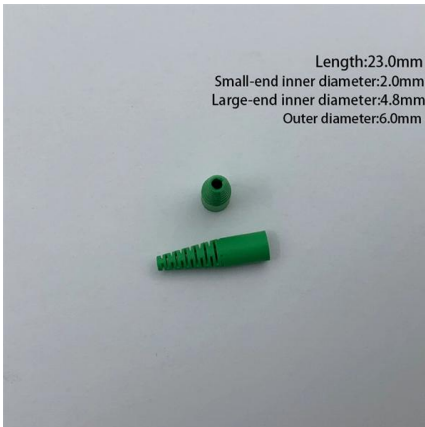
100-meter OS2-rated duplex singlemode fiber cable (LC/LC) supports high 100 Gb bandwidths to handle the network devices in your data center or cloud service.





Single-mode vs Multimode SFP: What's the Difference?

Single-mode SFP and multimode SFP are the two main types of hot-pluggable optical transceivers used in fiber optic networks. Both of them use LC

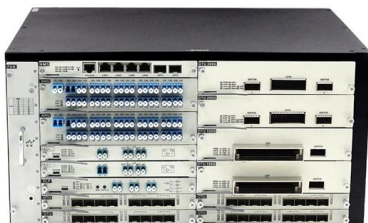


100G-LR1 Single Lambda QSFP28 20km , PAM4

Our EDGEOPTIC 100G-QSFP28-SL20 is a multi-vendor compatible 100G-LR1 Single Lambda QSFP28 optical module designed for next-generation 100 Gigabit

100G QSFP28 Transceiver Modules , Optical

The 100G QSFP28 module solution provides high-performance 100GbE connectivity for data centres, enterprise core & distribution layers, computing networks and



100G LR4 Single-Mode Optical Module

QSFP28 transceiver that supports 100G connections up to 10 km using single-mode fiber with a duplex LC UPC connector.



Understanding 100G Single Fiber QSFP28 Module for

100G single fiber QSFP28 modules enable fast, cost-effective network upgrades using one fiber strand, ideal for scalable modern data centers.



40G/100G single -mode single -core optical fiber module application

As data center and telecommunications networks continue to demand higher speeds and larger capacities, the need for high-speed optical fiber modules has become increasingly important.

100G Single-Mode Modules for Short Distance Transmission

100G Single-Mode Modules for Short Distance Transmission As bandwidth demand continues to grow, network service providers are looking at 100G Ethernet network to accommodate



100G OS2 Single-Mode Fiber Optic Patch Cables

Single Mode OS2 Fiber Patch Panels with Riser rated insulation for 100G networks with premium LC, FC, SC, ST, MTRJ connectors.



Understanding Single Mode LC Connector: A

Discover the essentials of Single Mode LC Connectors in our comprehensive guide. Explore our range of fiber optic cables, including simplex



100G Singlemode Armored Fiber Cable, LC-LC, 9/125,

50-meter OS2-rated duplex singlemode fiber cable (LC/LC) supports high 100 Gb bandwidths to handle the network devices in your data center or cloud service.

Exploring 100G Single Mode QSFP28 Transceiver Types

Explore 100G single mode QSFP28 module types by distance, cost, and use case to select the best fit for data center, metro, or long-haul networks.



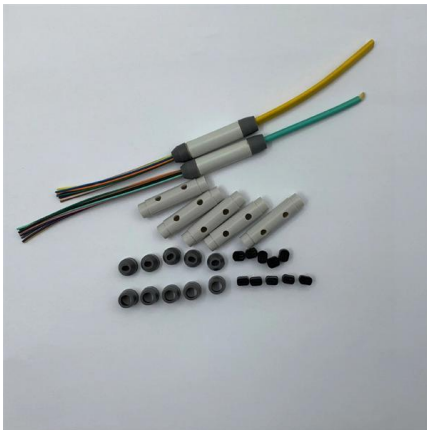
100G QSFP28 Single Mode Transceivers: Types, Specs, and

Explore the world of 100G QSFP28 single mode transceivers, including LR4, ER4, ZR4, and PAM4 variants. Learn about their specifications, applications, and how to choose the right



100GBASE QSFP-100G Modules Data Sheet

The Cisco QSFP-100G-ERL-S Module supports link lengths of up to 25 km over a standard pair of G.652 Single-Mode Fiber (SMF) with duplex LC



Future-Proof Your Data Center with Single-Lambda 100G QSFP28 DR

To address this, Cisco has taken the first step toward a vision that is based on single-lambda 100G optics. Single-lambda 100G enables you to position yourself for future upgrades to 400G or new

Contact Us

For datasheets, pricing, or custom high-speed optical interconnect solutions, please visit:
<https://www.syropy.com.pl>