

100G Liquid-Cooled Switch OEM





Overview

The DynaNET 100G-01 is a high performance switch for Automotive and rugged applications, where extreme levels of performance, reliability and compactness are required. All Products Solutions Services Resources Contact Us FREE SHIPPING on Orders Over US\$79 United States Home Switches Enterprise Switches 100G Enterprise Switches 100G Enterprise Switches 1/2. Delivers 16x 40/56/100GbE ports over QSFP28, and with breakout cables up to 32x 50GbE or 64x 10/25GbE ports for a total throughput. As a result of continuous research and development efforts in energy-saving and sustainable solutions, Accton introduced a two-phase immersion-cooled 100G switch module for high-speed cloud computing. The density of data center deployments keeps increasing to satisfy the growing demand for. Amphenol's Rugged 432-Channel 100G Ethernet Switch Box is liquid cooled and configurable for system connectivity, speeds, port types, and interoperation with various high-speed media converters and connectors for system interfacing.



100G Liquid-Cooled Switch OEM



432-CHANNEL 100G FIBER OPTIC

Amphenol's Rugged 432-Channel 100G Ethernet Switch Box is liquid cooled and configurable for system connectivity, speeds, port types, and interoperability with various high-speed media

Immersion Liquid Cooling 100G QSFP28 1m AOC Cable

FiberMall QSFP28-100GAOC-C1M 100G QSFP28 to QSFP28 is a high-performance, cost-effective AOC Cable optimized for 10GBASE and FC, and transmission



Two-Phase Immersion-Cooled 100G Switch Module

In partnership with the world's most advanced semiconductor manufacturer, we are deploying our two-phase immersion-cooled 100G switch module and the SONiC open network operating system.

6U VPX Switch for 100Gb Ethernet Switching

This next-generation 6U Switch supports 1/10/25/40/100 GbE, with up to 6.4 Tb/s of switching capability. It features 7 optional 40/100GbE optical interfaces to VITA 66 and 4 optional



Oil coolers

Stacked Shell Cooler AKG Stacked Shell Cooler is an liquid cooled aluminium brazed heat exchanger mounted directly on the engine. The hot oil is cooled by



Support

Product models The H3C S6850-56HF-CP cold-plate liquid-cooled Ethernet switch is a high-density, intelligent 25G access switch developed by H3C for cloud data centers and cloud computing



100Gb Data Center Switches

FS 100 Gigabit data center switches with build-in broadcom switch chip provides powerful hardware switching capacity and data center features (supporting stacking, MLAG, RoCEv2, PFC, ECN,



DynaNET 100G-01

The liquid cooling infrastructure of the vehicle may be used to feed the DynaNET 100G-01, delivering significant savings in integration cost and complexity. Field-proven quick disconnects provide a fast



OEM 100g Switch Factory, Suppliers

Welcome to the future of networking with ODOT Automation's latest innovation, the 100g Switch. This cutting-edge switch is designed to revolutionize data transfer and connectivity within your network

Immersion Liquid Cooling 100G QSFP28 3m AOC Cable , FiberMall

FiberMall QSFP28-100GAOC-C3M 100G QSFP28 to QSFP28 is a high-performance, cost-effective AOC Cable optimized for 10GBASE and FC, and transmission distance up to 100m.



DynaNET 100G-01

The DynaNET 100G-01 is liquid cooled and has no vents nor moving parts, dramatically increasing reliability. Since it does not require any ventilation, the



DynaNET 10G-01

The DynaNET 10G-01 is a high port density switch for Automotive and rugged applications, where extreme levels of performance, reliability and compactness



Diamond_C100L_DS

DIAMOND GEM-100L (10.6 um) Liquid-Cooled RF-Excited OEM Industrial CO2 Laser Features

NVIDIA GB200 NVL72 Liquid-to-Air Rack Solutions

To address this gap, AMAX developed a solution that brings liquid-cooled infrastructure into environments originally designed for air-cooled systems. The



100Gb Ethernet Switches

FS 100G Switches offer high programmability and scalability, designed for large enterprises and hyper-converged infrastructure (HCI) networks. Learn more!



Exploring the Future of AI Networking: Liquid-Cooled Switches on the

Imagine a data center where even the most powerful switches run cool and stable--without noise, thermal throttling, or energy waste. Cisco is actively innovating in direct-to-chip



10-Slot Benchtop 6U OpenVPX LFT Test Chassis WCG000-17

The WILD100 100GbE 6U OpenVPX Test Chassis (WCG000-17) is a 100Gb Ethernet-enabled benchtop 6U VPX Liquid Flow Through (LFT) Chassis, Backplane, Chassis Manager, and integrated

Data Center Switches

Ruijie's first submersible liquid-cooled switch deployed at large data center scale with high power consumption elimination, energy-saving and emission reduction.



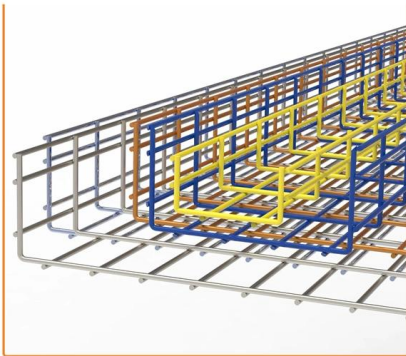
NVIDIA GB200 Supply Chain: The Global Ecosystem

This market enthusiasm has led to a "domino effect" in the supply chain: Taiwanese server manufacturing giants (Hon Hai/Foxconn, Accton, Chenbro, Auras) are



What is Liquid Cooled Switch?

A liquid cooled switch is an advanced networking device designed for data centers, utilizing liquid-based cooling systems to dissipate heat more



100G EDR QSFP28 active optical cable for liquid cooling

Details The 10Gtek EDR QSFP28 active optical cable (AOC-Q4Q4-xxx-B) is designed for use in 100-Gigabit Ethernet links up to 100m over Multi-Mode Fiber (MMF) especially for liquid immersion

Liquid Cooling System for NVIDIA H100 GPU , JetCool

Pre-order JetCool's SmartPlate for NVIDIA H100 GPUs--an advanced liquid cooling system that cuts power use and unlocks peak GPU performance.



- IP65/IP55 OUTDOOR CABINET
- OUTDOOR MODULE CABINET
- OUTDOOR ENERGY STORAGE CABINET
- 19 INCH

Switches , 100G

MikroTik CRS510-8XS-2XQ-IN A versatile 100 Gigabit switch that offers speed, value, and diverse





Data Center Switches

Low-carbon and Energy-saving Ruijie's first submersible liquid-cooled switch deployed at large data center scale with high power consumption elimination, energy-saving and emission reduction.

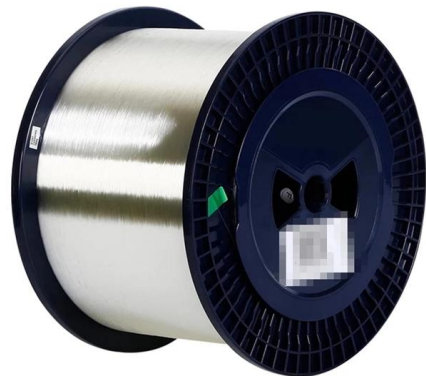


100G Ethernet Data Center Switches

NADDOD's 100G data center switch is a powerful networking solution that provides high-speed connectivity for modern data centers. These switches deliver speeds of up to 100Gbps, making them

00_GEM-50-60-100LC

This is the Operator s Manual for the GEM-100 liquid cooled OEM/Industrial carbon dioxide (CO2) lasers manufactured by Coherent/DEOS®. These lasers are OEM systems, they are designed as



Diamond C-70 Liquid-Cooled OEM Lasers Preinstallation Manual

The cooling system must have sufficient capacity to maintain the coolant temperature at the outlet of the refrigerated recirculator within the range given in Table 3-2, "C-70 Liquid-Cooled Configuration and

10Gtek's 100G Optical Solution For



Immersion Cooling

It is designed for immersion cooling system, managing the QSFP28 interface of switch or other devices to extend from liquid to the surface. In the



H3C Data Center Switches Green Energy-Efficient Technologies

Liquid cooling has higher thermal transfer efficiency than air cooling. It uses liquid convection and heat transfer to lower the temperature of electronic components, preventing component failures or rapid

100G EDR QSFP28 active optical cable for liquid cooling

The 10Gtek EDR QSFP28 active optical cable (AOC-Q4Q4-xxx-B) is designed for use in 100-Gigabit Ethernet links up to 100m over Multi-Mode Fiber (MMF)



Contact Us

For datasheets, pricing, or custom high-speed optical interconnect solutions, please visit:

<https://www.syropy.com.pl>