

10 Gigabit Switch Fiber Port Module





10 Gigabit Switch Fiber Port Module



10 Gigabit SFP Switches , 10 Gig SFP Switch , 10Gbs

Each 10 gig SFP switch has 4x1G/10G SFP/SFP+ ports, ideal for efficient fiber aggregation and high-density fiber connectivity solutions. These 10 Gbps

What is a 10G SFP+ Switch and How to Use It?

A 10G SFP+ switch is a network switch equipped with SFP+ ports that support 10Gbps speeds. Devices (such as servers, routers and other



Passive optical network

Passive optical network A fiber optic cable assembly with SC APC connectors, as commonly used to link optical network terminals to passive optical networks A

Crestron 10 Port PoE+ Managed Switch

NETGEAR's class-leading AV network switches are designed to make integration with Crestron AV-over-IP products as simple as possible. The CEN-SWPOE-10 is a 10 port managed Ethernet switch

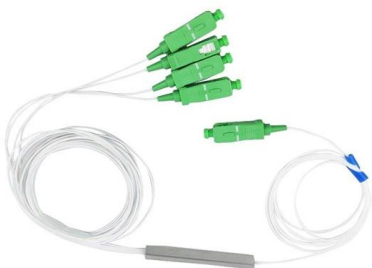


Hanutech Unmanaged 10 Ports Gigabit Fiber Switch, 2

Hanutech Unmanaged 10 Ports Gigabit Fiber Switch, 2 Port RJ45 10/100/1000M-Tx + 8 Port SFP Slots 1.25G Supported, Fiber Switch with SFP Module (4 Pair,

Powerful Online Community Software , Higher Logic

Higher Logic's powerful online community brings together organizations and people, making real conversations happen. Book a demo today!



Support Documents and Downloads

Search technical documentation and downloads including firmware and drivers.



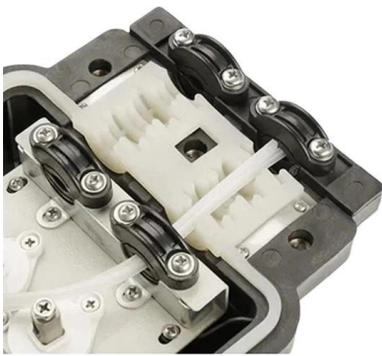
Small-Form Factor Pluggable (SFP) and Stacking Accessories

This article provides technical data on Fiber Transceivers and stacking accessories compatible with Meraki devices.



Cisco C1300-24XS Catalyst 1300 24-Port SFP+ 4x10GE

Buy Cisco C1300-24xs Catalyst 1300 C1300-24xs Manageable - Gigabit Ethernet, 10 Gigabit Ethernet - 10gbase-x, 1000base-t - 3 Layer Supported - 49.02 W Power



SFP Optical Transceiver , SFP Optical Module , Perle

Multimode and single-mode fiber Gigabit Ethernet, Fast Ethernet, Fiber channel, ATM/SONET, SDH Hot-pluggable with durable metal enclosure Can be installed



Cisco Catalyst 6500 Series Switches

Cisco Catalyst 6500 Series 10 Gigabit Ethernet Interface Modules Data Sheet 27-Feb-2017 Cisco Catalyst 6500 Series VPN Services Port Adapter



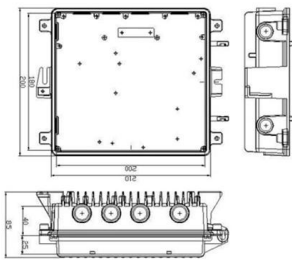
Optic Modules Datasheet

Optic Modules Data Sheet SFP (form factor) = small form-factor pluggable transceiver SMF (media) = single-mode fiber-optic MMF (media) = multimode fiber-optic XFP (form factor) = 10-gigabit small



8 Port 10 Gigabit SFP Managed Switch, Support 1G Sfp

10G08-0800GSM is a Layer 3 10G fiber managed switch, featuring 8 x 10Gbps SFP+ fiber ports. It integrates comprehensive security policies, robust QoS capabilities,



Latest products

CLEARANCE! PRODUCTS on SALE! All Our PoE Switches ALFA Network products AQARA Smart Home Products NEW ASUS Wireless Products



KD Tech -- High-Speed Optical Connectivity

KD Tech designs semiconductor ICs for multi-gigabit optical networking over fiber optics. Solutions for automotive, industrial, and consumer connectivity.



HMS Networks



HMS creates products that enable industrial equipment to communicate and share information with software and systems. In short: Hardware Meets Software(TM).



Phoenix Contact 2891080 Ethernet Switch, Managed, 28 Port,

Rack-mount managed Ethernet switch meets IEC 61850-3 and IEEE 1613. Provides eight RJ45 ports at 10/100 Mbps, 16 SC-D SM fiber ports at 100 Mbps and four gigabit combo ports (10/100/1000 Mbps)



MokerLink Store

It provides 8* 1G/10Gbps SFP+ ports with line speed forwarding capability per port. This series of switches provide advanced network



Cisco 10GBASE SFP+ Modules Data Sheet

The Cisco 10GBASE SFP+ modules give you a wide variety of 10 Gigabit Ethernet connectivity options for data center, enterprise wiring closet, and





8 Port 10Gb SFP+ Web Managed Fiber Switch , Multi

?10Gb Super-Fast Fiber Switch?This 10 gigabit switch features 8 x 10G SFP+ ports and 160Gbps switching capacity, providing higher-speed connectivity for



Cisco Industrial Ethernet 3000 Layer 2/Layer 3 Series

This data sheet describes the benefits, specifications, and ordering information for the Cisco Industrial Ethernet 3000 Series Switches.



10 Gigabit Fiber SFP+ Optical Transceiver Module

Compatibility in your network is everything, and this SFP+ Transceiver Module delivers. It has been designed, programmed and tested to work with HP / HPE



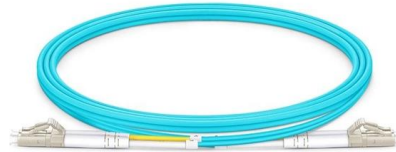
3onedata , Industrial Communication Solutions

ICS5400TSN Series Layer 3 Managed Switch
ICS5400TSN Series: A robust 44-port Gigabit/10Gigabit Layer 3 TSN Industrial Ethernet Switch by 3onedata.



Gigabit Ethernet

Gigabit Ethernet was the next iteration, increasing the speed to 1000 Mbit/s. The initial standard for Gigabit Ethernet was produced by the IEEE in June 1998 as



Network switch

Network switch Avaya ERS 2550T-PWR, a 50-port Ethernet switch A network switch (also called switching hub, bridging hub, Ethernet switch, and--by the IEEE --

10G SFP+ Optical Transceivers , Transceiver Module

FS 10GbE SFP+ module solutions provide a wide variety of 10 Gigabit Ethernet connectivity options for data centers, enterprise wiring closets, Internet Service



101190

Dies vereinfacht Ihre Installation: anstatt beispielsweise eine Schnittstellenkarte im Switch austauschen zu müssen, kann ein SFP Port als Gigabit Ethernet, Glasfaser oder 2-Draht Verbindung dienen.



4 Port 10/100/1000 RJ45 to Fiber Switch

Our ESW-2206 optical fiber switch has 2 Fiber Optic SFP Module ports and 4 X 10/100/1000 Base-TX copper RJ-45. Works Best with Fibertronics Cat6 6 or Cat

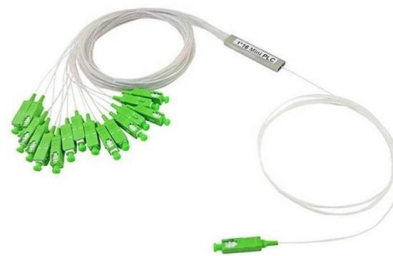


Ubiquiti Store United States

SFP & Fiber SFP cables, modules, and 10G RJ45 adapters for full optical networking.

SFP3213-10: 10 Gigabit SFP Module for Switches

The transceiver provides 10 Gbps serial optical data transfer rates on a single duplex fiber core up to 10,000 meters at 1,310 nm wavelength, ideal for



Contact Us

For datasheets, pricing, or custom high-speed optical interconnect solutions, please visit:
<https://www.syropy.com.pl>