

10 Gigabit 10km Optical Module





10 Gigabit 10km Optical Module



SFP28 o QFSP28 Optical Modules for Sale , Cables on Demand

SFP28 o QFSP28 Optical Modules Amphenol 25G SFP28 Optical Transceiver Modules and 100G QSFP28 Optical Transceiver Modules Available Now in SR (Short-Range) Multimode and LR (Long

10G Single-mode SFP+ Transceiver Module (SMF,

BENCHU GROUP's SFP+-10G-LR13-10 SFP+ transceiver module is a high-performance optical module designed for 10 gigabit ethernet applications over



SFP+ Optical Transceiver Modules (10G-SR/LR)

Genuine Amphenol 10GBASE-SR SFP+ Optical Transceiver Modules provide a high-density, high-performance interface for 10-Gigabit Ethernet and Fibre Channel

An introduction to SFP ports on a Gigabit switch

An SFP module, or transceiver, acts as a converter between the network switch and a fiber optic or Ethernet cable. For example, it converts electrical signals to optical signals for fiber

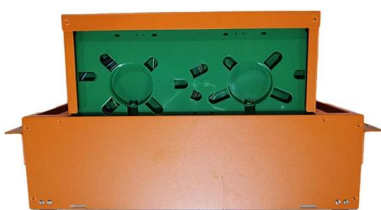


What Is 10GBASE-LR? SMF 1310nm 10km SFP+ Explained

10GBASE-LR is a 10-gigabit Ethernet optical standard that operates at 1310 nm over single-mode fiber (SMF), supporting link distances of up to 10 km. It is typically implemented using SFP+ transceivers

XG-SFP-LR-SM1310 10GBASE-LR SFP+ 1310-nm 10-km DOM

XG-SFP-LR-SM1310 10GBASE-LR SFP+ 1310-nm 10-km DOM Duplex LC SMF Optical Transceiver Module Applicable to data center and campus networks, enabling cost-effective, efficient, and high



10G SFP+ LR 1310 nm 10 km Optical Transceiver

The 10G SFP+ LR 1310 nm 10 km Optical Transceiver Module delivers carrier-grade performance for 10 Gigabit Ethernet links up to 10 km over ITU-G.652 single



Small-Form Factor Pluggable (SFP) and Stacking Accessories

Meraki's hardware warranty and return policy and Meraki EOL policy does not apply to Cisco Optics, Cables and accessories in any shape or form. C8455-G2-MX: The compatible SFP modules on the



SFP 10 Gigabit Fiber Module

Supercharge your network speeds with our SFP 10 Gigabit Fiber Module 10GBase-LRM, LC Multimode. Effective up to 220m and designed for high-speed data rates

Ubiquiti 10 Gbps UACC-OM-SM-10G-S-2 , Cendirect Canada

Ubiquiti 10 Gbps Bidirectional Single-Mode Optical Module - For Data Networking, Optical Network - 1 x LC Simplex 10GBase-BiDi Network - Optical Fiber - Single-mode - Gigabit Ethernet - 10GBase-X - 10



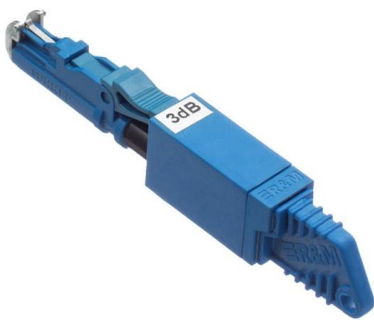
SFP+ Single Mode LC Module (10km)

TRENDnet's 10G SFP+ Single Mode LC Modules enable reliable, long-distance network applications. Each 10G SFP+ transceiver supports high-speed data rate



10 100 1000 Base T Explained: A Guide to Gigabit Ethernet

Learn what 10 100 1000 Base T means, how Gigabit Ethernet works over copper, supported cable types, speeds, and common network applications.



10G SFP+ Optical Transceivers , Transceiver Module

FS 10GbE SFP+ module solutions provide a wide variety of 10 Gigabit Ethernet connectivity options for data centers, enterprise wiring closets, Internet Service

Aruba 9106 Router 4 Ports 3 RJ-45 S5H01A#ARB , PC-Canada

Aruba HPE SFP+ Module - For Data Networking, Optical Network - 1 x LC 10GBase-LR Network - Optical Fiber - Single-mode - 10 Gigabit Ethernet - 10GBase-LR - TAA Compliant



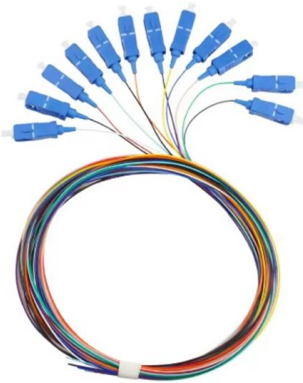
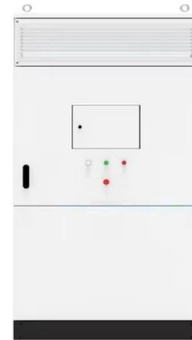
1 Gigabit Singlemode SFP Fiber Optic Transceivers

1 Gigabit Singlemode SFP Transceivers Our 1 Gigabit Singlemode SFP Transceivers offer high-performance, reliable connectivity for singlemode fiber optic networks.



SFP+10G 1310nm 10Km LC Optical Module Guide

The SFP+10G 1310nm 10Km LC optical module is a powerful and versatile solution for high-speed, long-distance data transmission. Understanding SFP+ optical

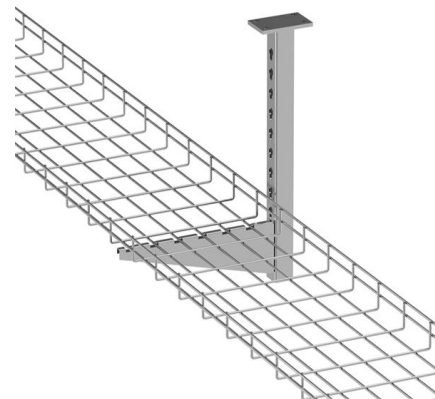


AIQ

High-Speed Performance: This SFP-10G LR 10KM optical transceiver module delivers stable 10Gbps data transmission over single-mode dual fiber, meeting SFF-8431 standards for

SFP Optical Transceiver , SFP Optical Module , Perle

Perle SFP Optical Transceivers are designed for use with Perle SFP Media Converters, Industrial Ethernet Switches, IOLAN SCG Console Servers and third



optical transceiver sfp+ 10g single mode module 1310nm 10km lc

Upgrade networks with our optical transceiver sfp+ 10g single mode module 1310nm 10km lc. This LC transceiver delivers effortless 10km connectivity for data centers and servers.



**Aruba 9106 Router 4 Ports 3 RJ-45
S5H01A#B2B , PC-Canada**

Aruba HPE SFP+ Module - For Data Networking,
Optical Network - 1 x LC 10GBase-LR Network -
Optical Fiber - Single-mode - 10 Gigabit Ethernet
- 10GBase-LR - TAA Compliant



**LINK-PP LS-SM3110-10C: Your Ultimate 10G
SFP+ LR**

Explore the LINK-PP LS-SM3110-10C 10G 10km
SFP+ module. Discover specs, applications &
why it's a top choice for reliable, long-distance

**10GBASE-LR SFP+ 1310nm LC 10km SMF
Optical**

The 10Gbps SFP+ transceiver links up to 10 km
away over single-mode fiber. This optical module
has a 1310nm DFB transmitter and a PIN
receiver, which ensure



**10 Gigabit Fiber SFP+ Optical Transceiver
Module**

That's a 10 Gbps connection up to a distance of
10 km (or 6.2 miles). The transceiver comes in a
mini-GBIC form factor, making it ideal for
environments that require



HP Aruba NETWORKING 100G LR QSFP28 LC 10KM SMF TRANSCEIVER For Optical

Features Aruba NETWORKING 100G LR QSFP28 LC 10KM SMF TRANSCEIVER - For Optical Network, Data Networking - 1 x LC 100GBase-LR Network - Optical Fiber - Single-mode - 100



10GBASE-LR SFP+ , From EUR12 , EDGE Optical Solutions

The EDGEOPTIC 10G-SFP-10 is a multi-vendor compatible 10GBASE-LR SFP+ transceiver for 10km single-mode fiber connectivity at 1310nm. With a 6dB

USB1000F-LX USB 3.0 Gigabit Fiber Ethernet Network Adapter

USB1000F-LX USB 3.0 Gigabit Fiber Ethernet Network Adapter Single Mode 1310Nm 10Km LC Optic Module S Description USB1000F-LX USB 3.0 Gigabit Fiber Ethernet Network Adapter Single Mode



What Is 10GBASE-LR? SMF 1310nm 10km SFP+ Explained

10GBASE-LR is a 10-gigabit Ethernet optical standard that operates at 1310 nm over single-mode fiber (SMF), supporting link distances of up to 10 km.



Aruba 50G I-Temp LR SFP56 LC 10km SMF TAA S6H23A , PC-Canada

Aruba 50G I-Temp LR SFP56 LC 10km SMF TAA Transceiver - For Data Networking, Optical Network - 1 x LC 50GBase-LR Network - Optical Fiber - Single-mode - 50 Gigabit Ethernet - 50GBase-LR - 50



Contact Us

For datasheets, pricing, or custom high-speed optical interconnect solutions, please visit:
<https://www.syropy.com.pl>